

MODULE CATALOG

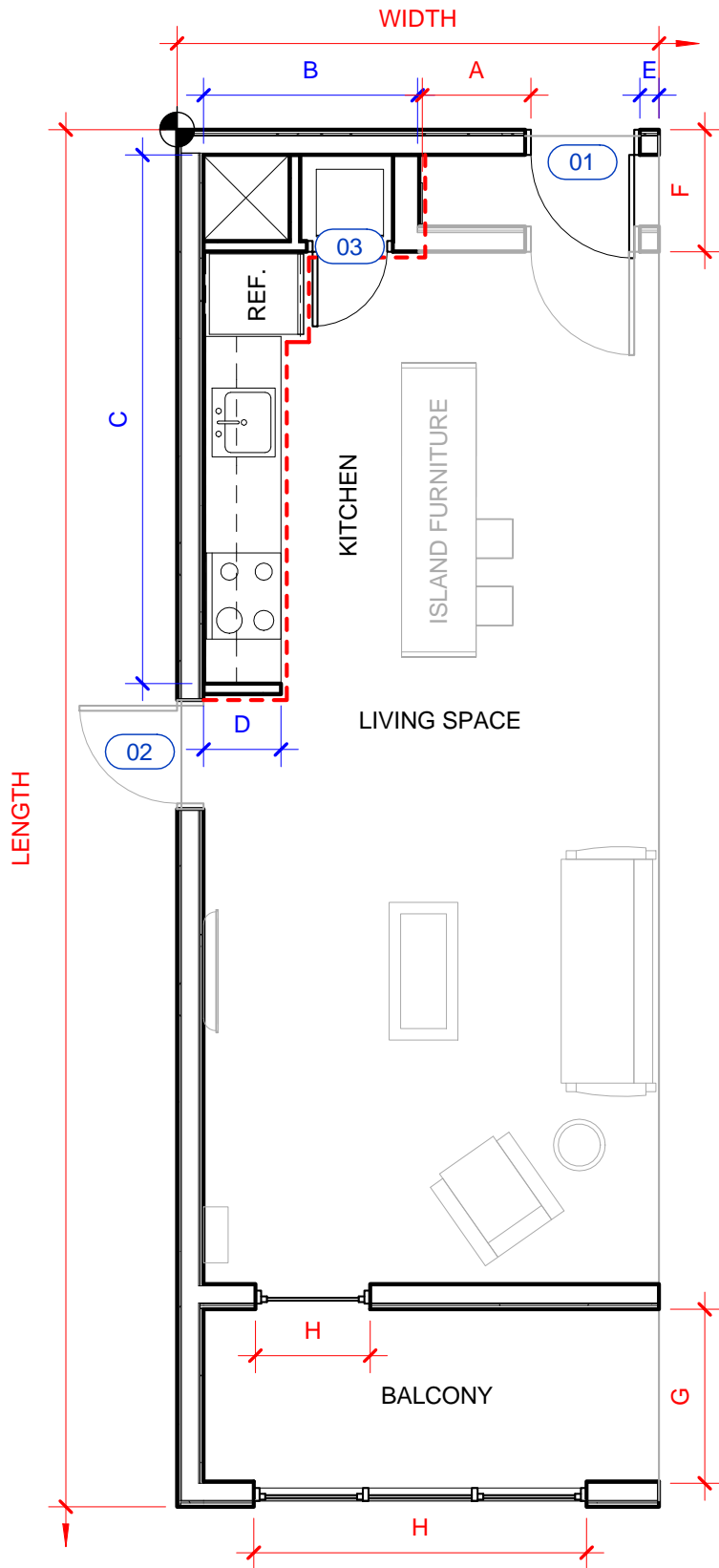
MODULE TRANSPORTATION NOTES:

- MODULES UP TO 60' IN LENGTH CAN BE HAULED
- MODULES LESS THAN 30' IN LENGTH CAN BE HAULED 2 AT A TIME
- MODULES 12' - 14' IN WIDTH REQUIRE 1 PILOT CAR
- MODULES OVER 14' IN WIDTH REQUIRE 2 PILOT CARS (LEAD & CHASE)
- MODULES CAN BE DELIVERED FURNISHED

7/2/15

MODULE PLANS

7/2/15



- CONTROL POINT
- DIM. VARIABLE DIMENSION
- DIM. FIXED DIMENSION
- FIXED AREA

MODULE A - VARIABLE OVERALL DIMENSIONS

	WIDTH	LENGTH	CEILING HEIGHT	FLOOR-TO-FLOOR HEIGHT
MINIMUM	12' - 7"	30' - 0"	8' - 0"	9' - 0"
RECOMMENDED	13' - 0"	34' - 0"	9' - 0"	10' - 0"
MAXIMUM	14' - 0" *4	40' - 0" *5	10' - 0"	11' - 0"

DIMENSION	NOTES
A	18" MIN. MIN. DOOR CLEARANCE
B	6' - 3" KITCHEN STANDARD
C	15' - 4" KITCHEN STANDARD
D	2' - 3" KITCHEN STANDARD
E	0' - 7" DOOR PLACEMENT STANDARD
F	3' - 7" MAX. DOOR PLACEMENT STANDARD
G	5'-0" REC.
H	3' - 0" MIN. COMPLY WITH EXIT PASSAGEWAY, NATURAL VENTILATION, AND NATURAL LIGHT *3 WIDTH OF WINDOW/SKIN PER STRUCTURAL REQ.; HEIGHT TO CEILING

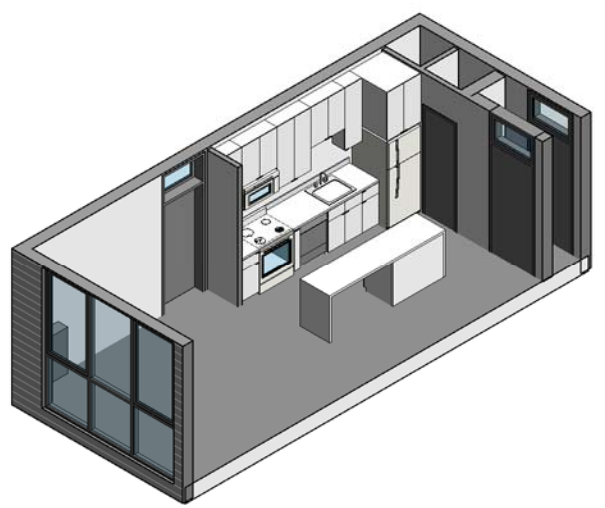
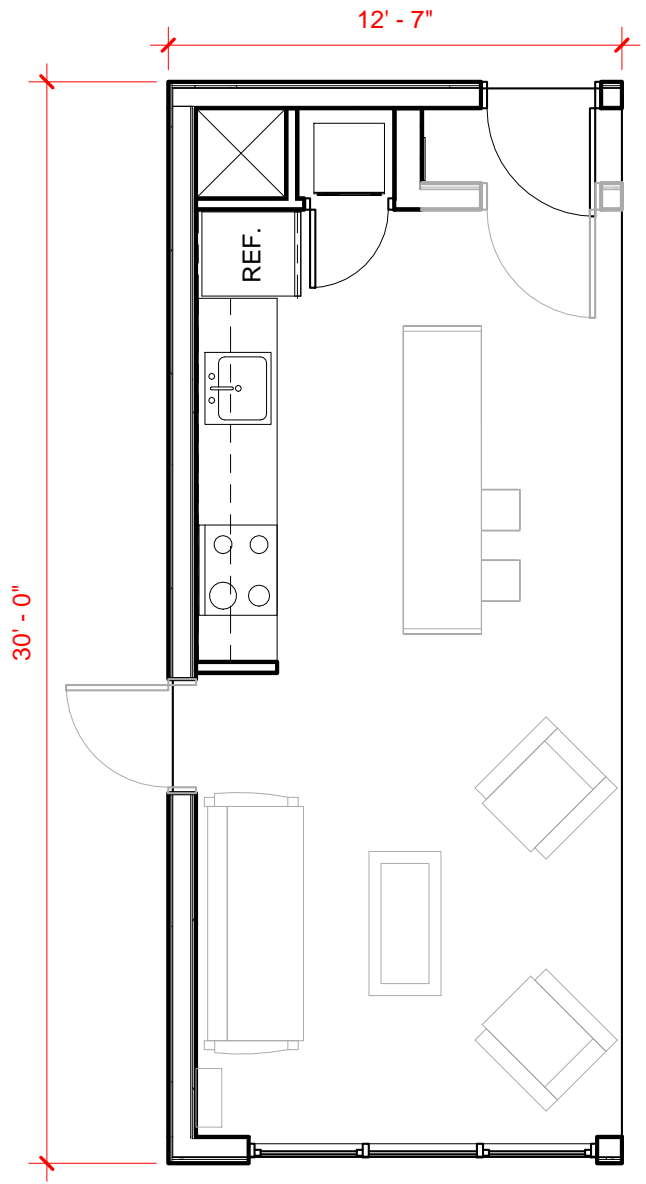
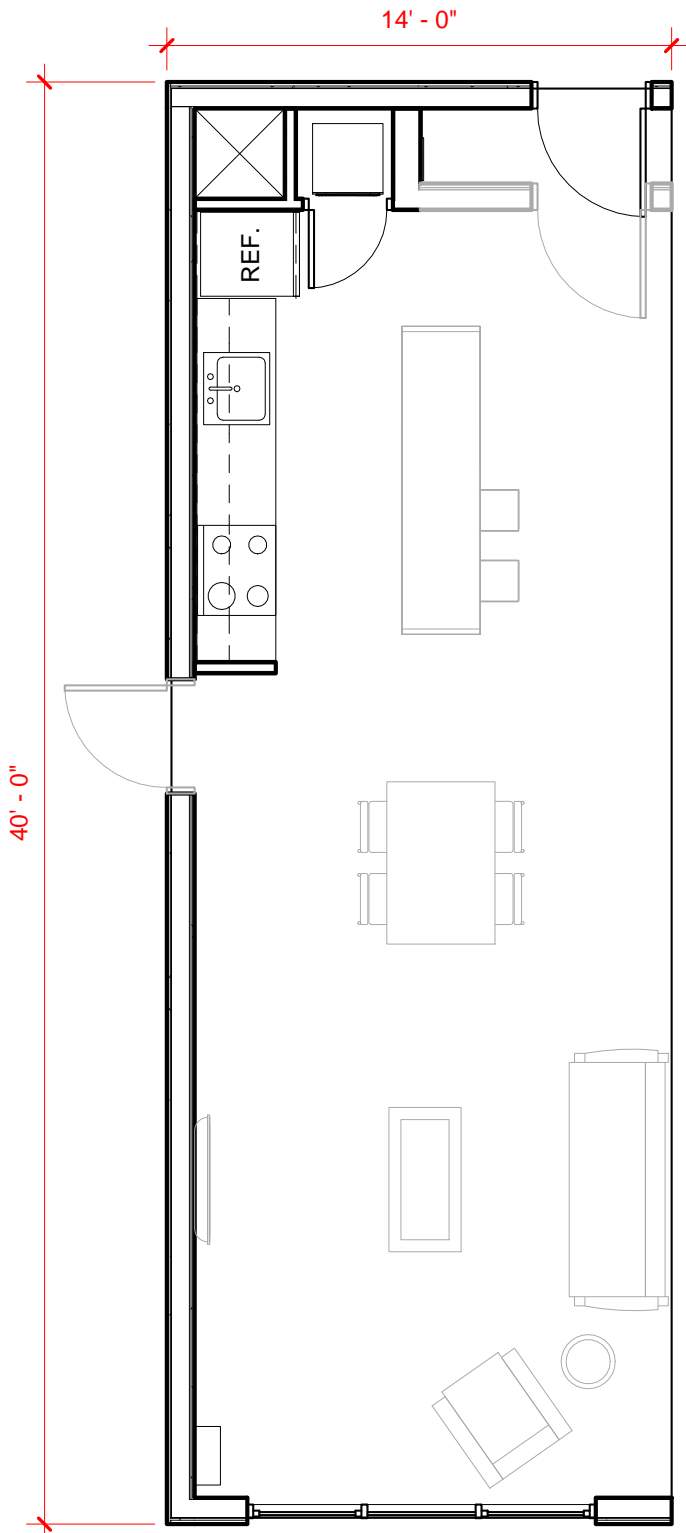
DOOR TAGS

DOOR TYPE	WIDTH		HEIGHT		TRANSOM Y/N
	MIN.	RECOM.	MIN.	RECOM.	
01	34" *1	36"	6' - 8" *2	9' - 0"	Y
02	34" *1	36"	6' - 8" *2	9' - 0"	Y
03	26"	26"		9' - 0"	N

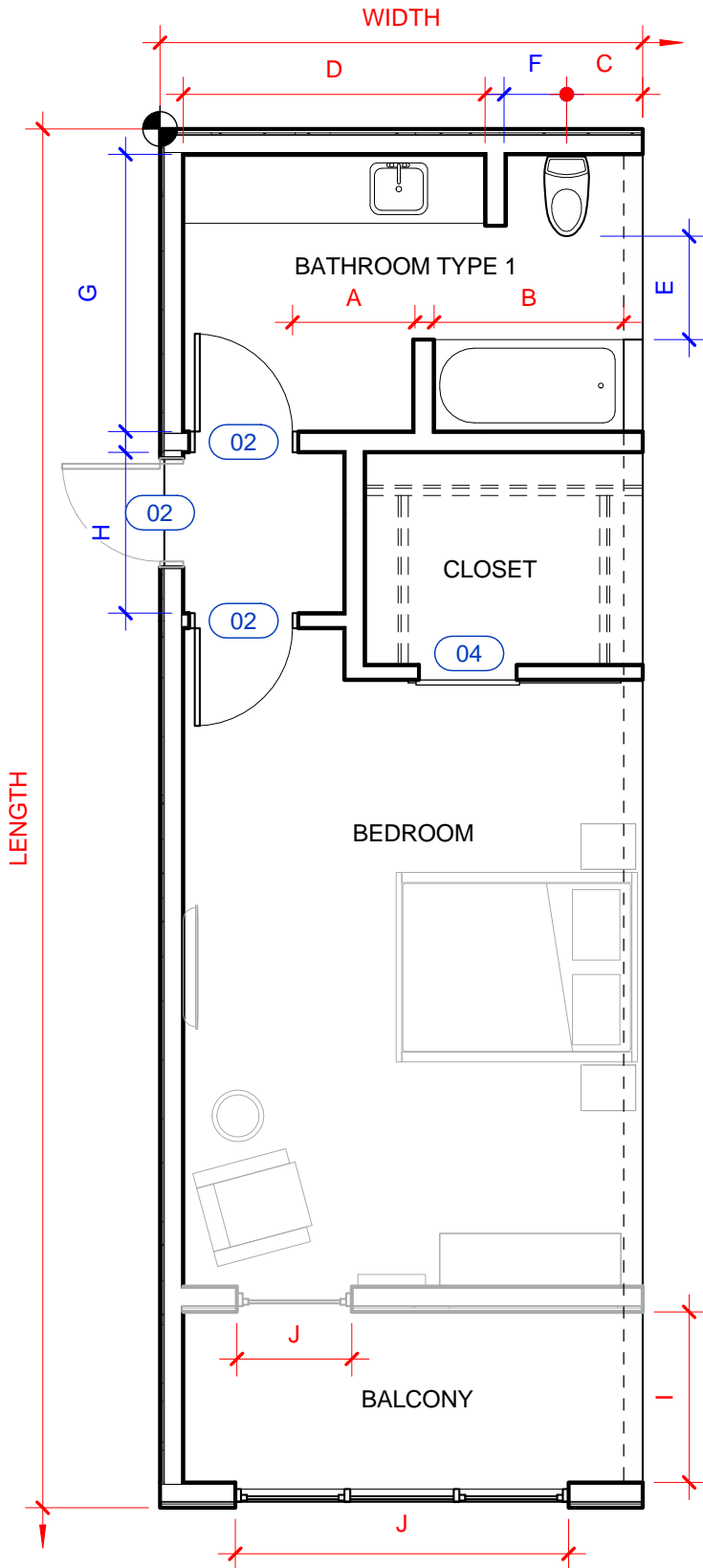
*** NOTES:**


- 1 - PER 1132A.3 (2) DOORS WILL PROVIDE A NET CLEAR OPENING OF 32"
- 2 - PER 1132A.3 (1) DOORS SHALL NOT BE LESS THAN 6' - 8"
- 3 - PER 1023.2 THE WIDTH OF AN EXIT PASSAGEWAY SERVING AN OCCUPANT LOAD OF LESS THAN 50 SHALL NOT BE LESS THAN 36"; MUST COMPLY WITH 1205.2, NATURAL LIGHT, MUST COMPLY WITH 1203.4, NATURAL VENTILATION
- 4 - OVER 14' WIDE REQUIRES 2 PILOT CARS (LEAD & CHASE)
- 5 - FOR OPTIMAL DESIGN PROPORTIONS

7/2/15 Scale 3/16" = 1'-0"



7/2/15 Scale 3/16" = 1'-0"



-  CONTROL POINT
- DIM. VARIABLE DIMENSION
- DIM. FIXED DIMENSION
- - - EXT. WALL

MODULE B1 - VARIABLE DIMENSIONS

	WIDTH	LENGTH	CEILING HEIGHT	FLOOR-TO-FLOOR HEIGHT
MINIMUM	11' - 6"	30' - 0"	8' - 0"	9' - 0"
RECOMMENDED	12' - 0"	34' - 0"	9' - 0"	10' - 0"
MAXIMUM	14' - 0"*6	40' - 0"*7	10' - 0"	11' - 0"

DIMENSION	NOTES
A	1' - 6" MIN. MIN. DOOR CLEARANCE
B	5' - 0" MIN. 5' - 6" RECOMMENDED TUB
C	1' - 6" MIN. MIN. CLEARANCE FROM EXT. WALL
D	6' - 3" MIN.
E	3' - 0" CLEARANCE IN FRONT OF TOILET
F	1' - 6" MUST MAINTAIN DISTANCE FROM TOILET TO PARTITION WALL
G	8' - 1" BATHROOM TYPE 1 STANDARD *1
H	4' - 8" HALLWAY WIDTH STANDARD *2
I	5' - 0" REC.
J	3' - 0" MIN. COMPLY WITH EXIT PASSAGEWAY, NATURAL VENTILATION, AND NATURAL LIGHT *3 WIDTH OF WINDOW/SKIN PER STRUCTURAL REQ.; HEIGHT TO CEILING

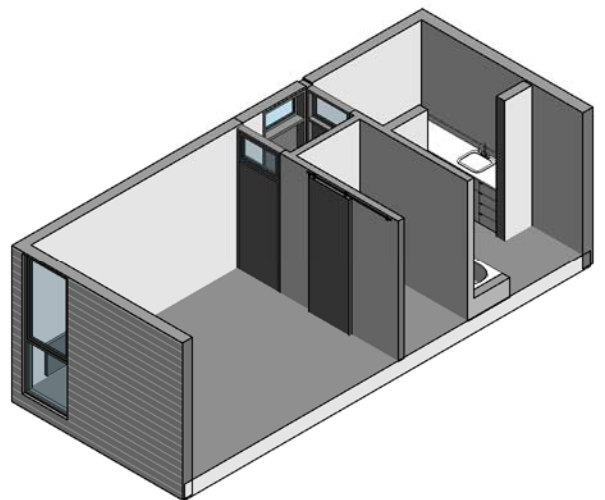
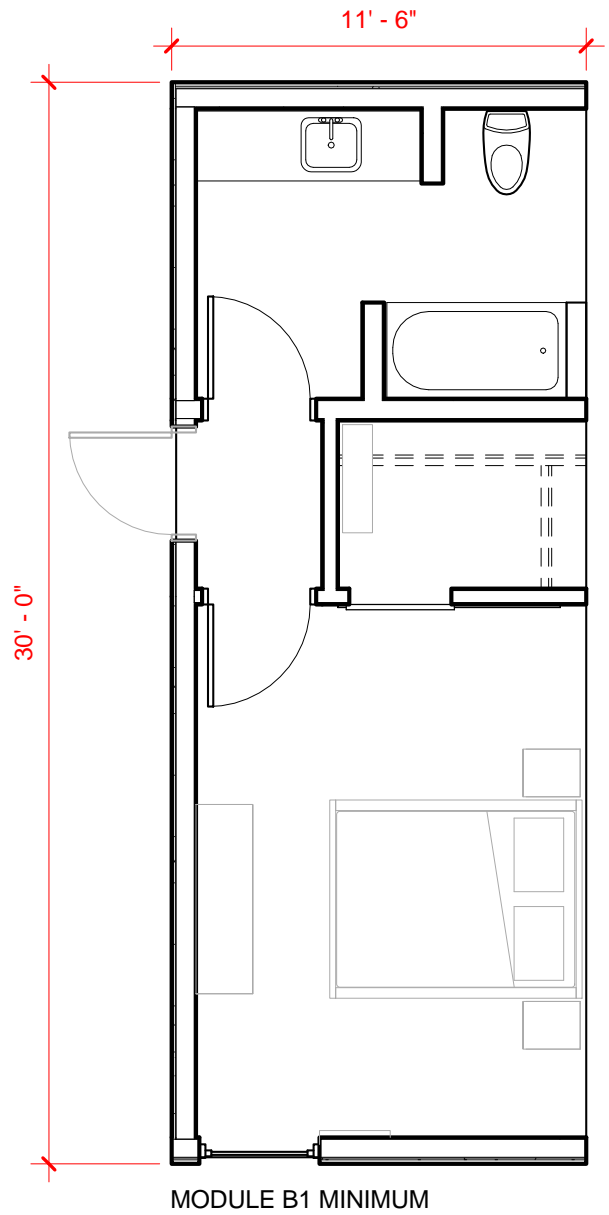
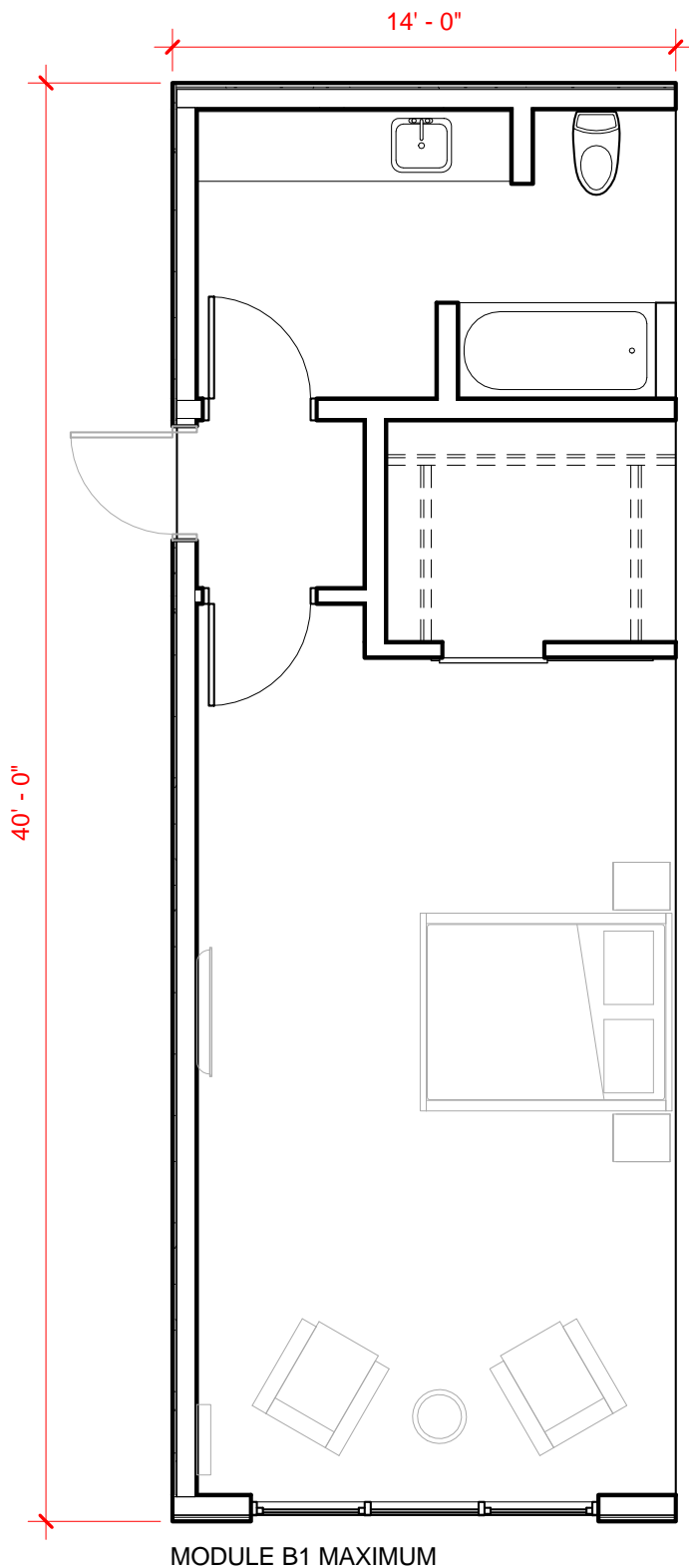
DOOR TAGS

DOOR TYPE	WIDTH		HEIGHT		TRANSOM Y/N
	MIN.	RECOM.	MIN.	RECOM.	
02	34"*4	34"	6' - 8"*5	9' - 0"	Y
04		36"		8' - 9"	N

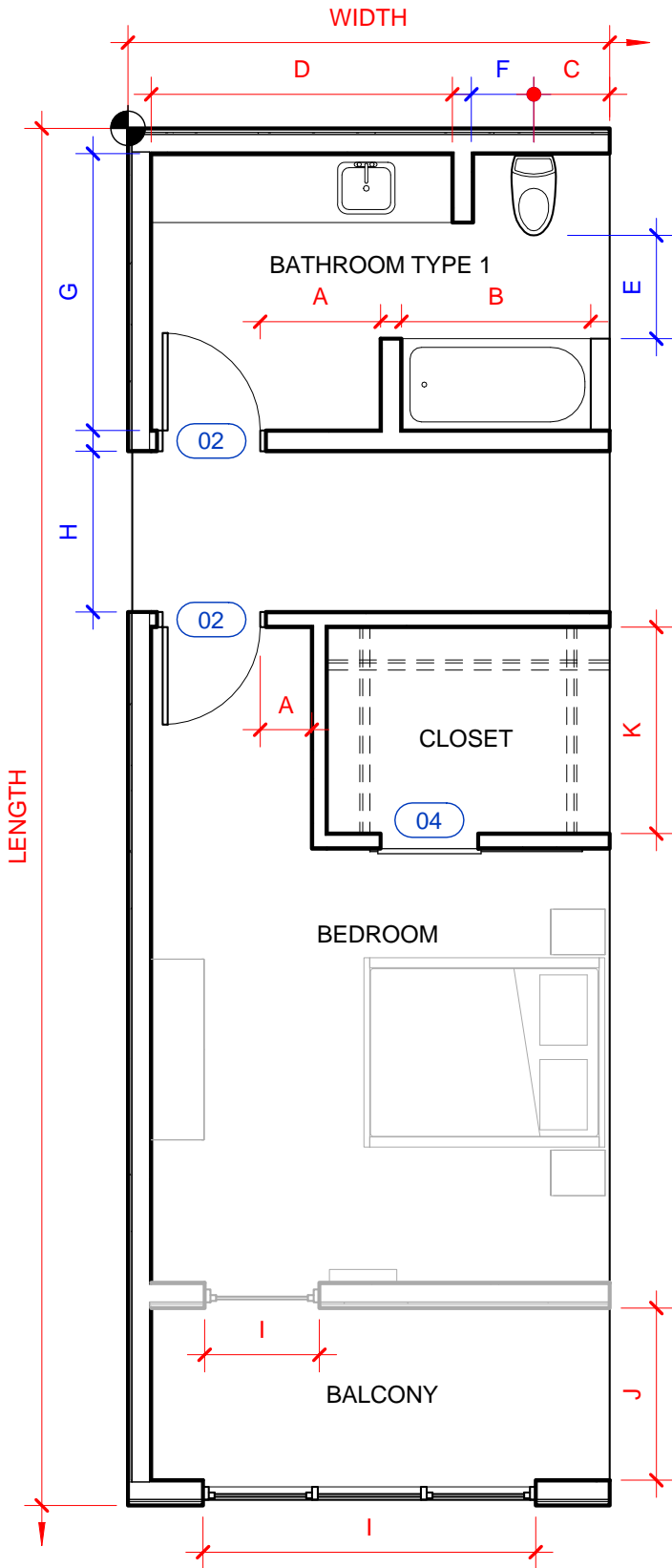
*** NOTES:**

- 1 - WHEN COMBINED W/ MOD. B2 WALLS MUST ALIGN
- 2 - WHEN COMBINED W/ MOD. B2 HALLWAY MUST ALIGN
- 3 - PER 1023.2 THE WIDTH OF AN EXIT PASSAGEWAY SERVING AN OCCUPANT LOAD OF LESS THAN 50 SHALL NOT BE LESS THAN 36"; MUST COMPLY WITH 1205.2, NATURAL LIGHT, MUST COMPLY WITH 1203.4, NATURAL VENTILATION
- 4 - PER 1132A.3 (2) DOORS WILL PROVIDE A NET CLEAR OPENING OF 32"
- 5 - PER 1132A.3 (1) DOORS SHALL NOT BE LESS THAN 6'-8"
- 6 - OVER 14' WIDE REQUIRES 2 PILOT CARS (LEAD & CHASE)
- 7 - FOR OPTIMAL DESIGN PROPORTIONS

7/2/15 Scale 3/16" = 1'-0"



7/2/15 Scale 3/16" = 1'-0"



CONTROL POINT

DIM. VARIABLE DIMENSION

DIM. FIXED DIMENSION

MODULE B2 - VARIABLE DIMENSIONS

	WIDTH	LENGTH	CEILING HEIGHT	FLOOR-TO-FLOOR HEIGHT
MINIMUM	11' - 6"	30' - 0"	8' - 0"	9' - 0"
RECOMMENDED	12' - 0"	34' - 0"	9' - 0"	10' - 0"
MAXIMUM	14' - 0"*6	40' - 0"*7	10' - 0"	11' - 0"

	DIMENSION	NOTES
A	1' - 6" MIN.	MIN. DOOR CLEARANCE
B	5' - 0" MIN.	5' - 6" RECOMMENDED TUB
C	1' - 6" MIN.	MIN. CLEARANCE FROM EXT. WALL
D	6' - 3" MIN.	6' - 11" RECOMMENDED COUNTER
E	3' - 0"	CLEARANCE IN FRONT OF TOILET
F	1' - 6"	MUST MAINTAIN DISTANCE FROM TOILET TO PARTITION WALL
G	7' - 11"	BATHROOM TYPE 1 STANDARD *1
H	4' - 8"	HALLWAY WIDTH STANDARD *2
I	3' - 0" MIN.	COMPLY WITH EXIT PASSAGEWAY, NATURAL VENTILATION, AND NATURAL LIGHT *3 WIDTH OF WINDOW/SKIN PER STRUCTURAL REQ.; HEIGHT TO CEILING
J	5' - 0" MIN.	
K	6' - 0" REC.	DEPENDENT ON MODULE LENGTH

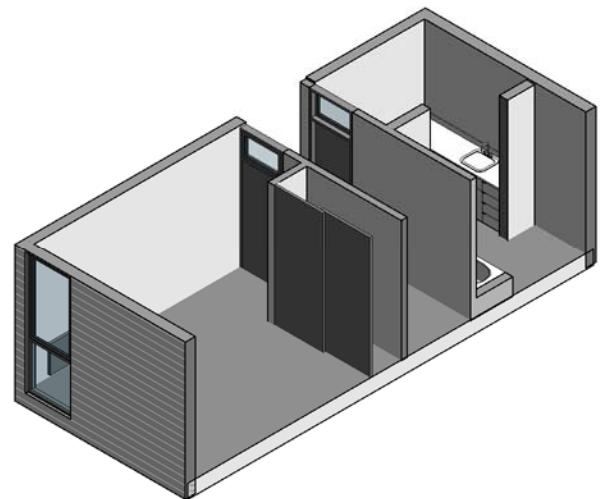
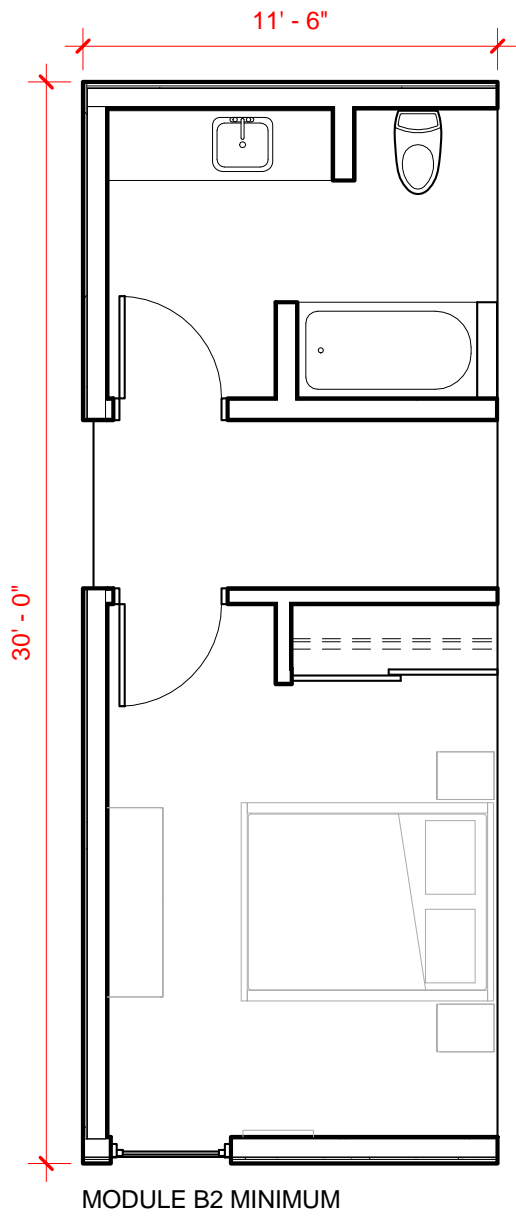
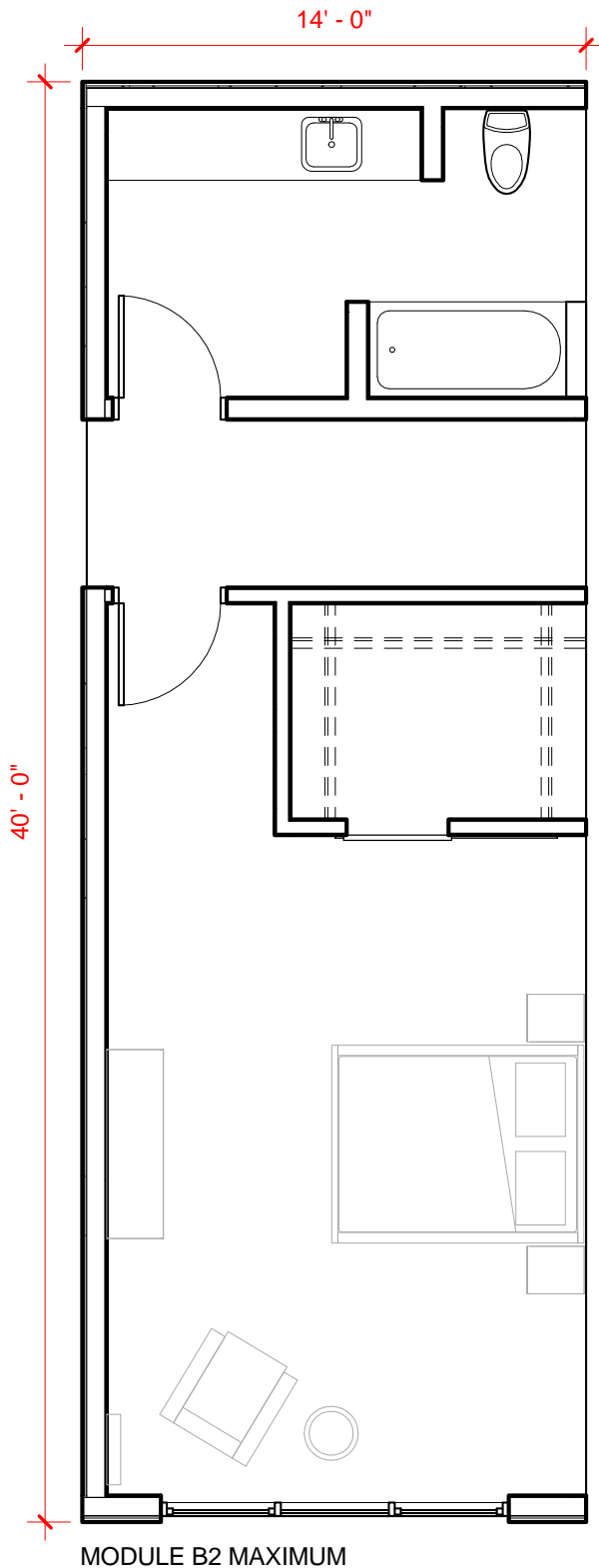
DOOR TAGS

DOOR TYPE	WIDTH		HEIGHT		TRANSOM
	MIN.	RECOM.	MIN.	RECOM.	Y/N
02	34" *4	36"	6' - 8" *5	9' - 0"	Y
04		34"		8' - 9"	N

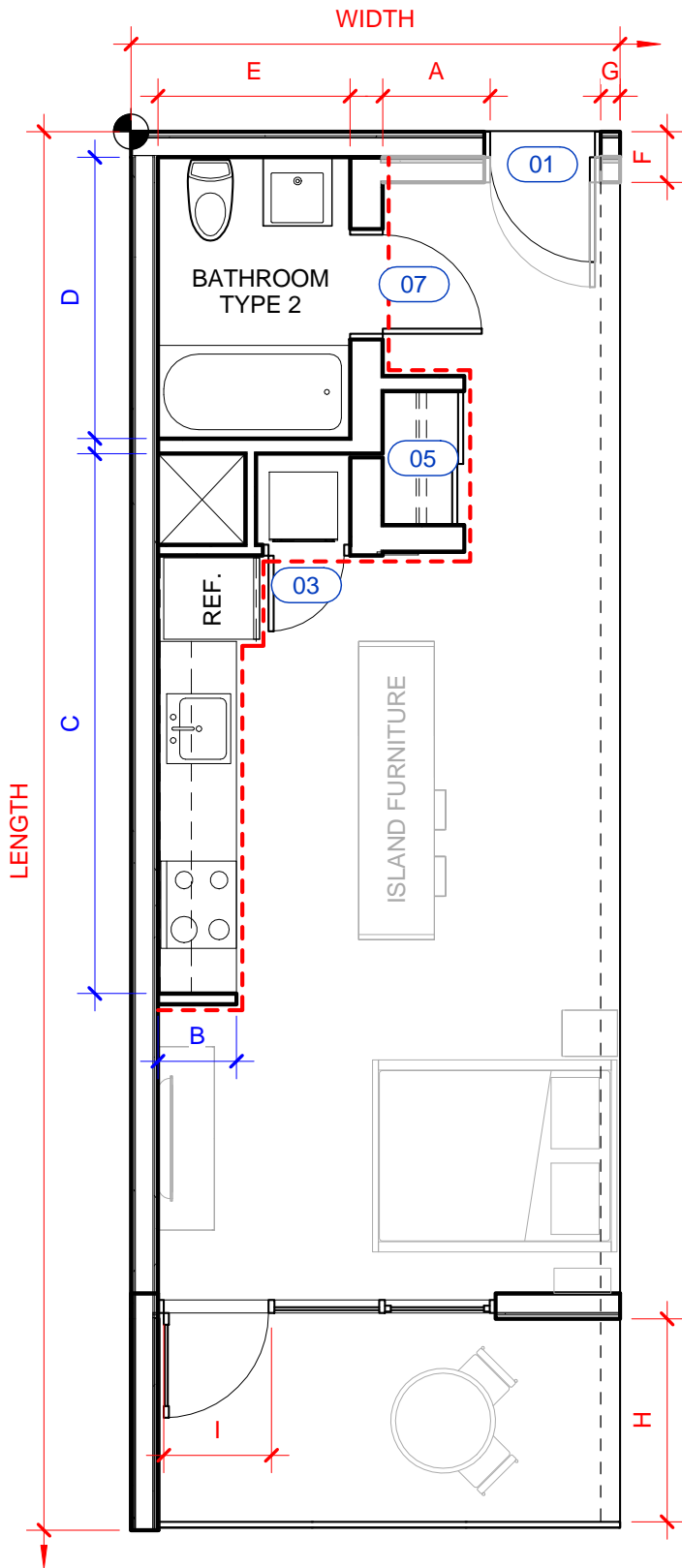
*** NOTES:**

- 1 - WHEN COMBINED W/ MOD. B2 WALLS MUST ALIGN
- 2 - WHEN COMBINED W/ MOD. B2 HALLWAY MUST ALIGN
- 3 - PER 1023.2 THE WIDTH OF AN EXIT PASSAGEWAY SERVING AN OCCUPANT LOAD OF LESS THAN 50 SHALL NOT BE LESS THAN 36"; MUST COMPLY WITH 1205.2, NATURAL LIGHT, MUST COMPLY WITH 1203.4, NATURAL VENTILATION
- 4 - PER 1132A.3 (2) DOORS WILL PROVIDE A NET CLEAR OPENING OF 32"
- 5 - PER 1132A.3 (1) DOORS SHALL NOT BE LESS THAN 6'-8"
- 6 - OVER 14' WIDE REQUIRES 2 PILOT CARS (LEAD & CHASE)
- 7 - FOR OPTIMAL DESIGN PROPORTIONS

7/2/15 Scale 3/16" = 1'-0"



7/2/15 Scale 3/16" = 1'-0"



CONTROL POINT

DIM. VARIABLE DIMENSION

DIM. FIXED DIMENSION

--- FIXED AREA

--- EXT. WALL

MODULE C - VARIABLE OVERALL DIMENSIONS

	WIDTH	LENGTH	CEILING HEIGHT	FLOOR-TO-FLOOR HEIGHT
MINIMUM	12' - 7"	35' - 0"	8' - 0"	9' - 0"
RECOMMENDED	13' - 0"	40' - 0"	9' - 0"	10' - 0"
MAXIMUM	14' - 0"*4	40' - 0"*5	10' - 0"	11' - 0"

	DIMENSION	NOTES
A	1' - 6" MIN.	MIN. DOOR CLEARANCE
B	2' - 3"	KITCHEN STANDARD
C	15' - 4"	KITCHEN STANDARD
D	7' - 11"	BATHROOM TYPE 2 STANDARD
E	5' - 6"	BATHROOM TYPE 2 STANDARD
F	1' - 5" MAX.	MIN. DOOR CLEARANCE WITH SETBACK
G	0' - 7" MAX.	DOOR PLACEMENT STANDARD
H	5' - 0" REC.	
I	3' - 0" MIN.	COMPLY WITH EXIT PASSAGEWAY, NATURAL VENTILATION, AND NATURAL LIGHT *1 WIDTH OF WINDOW/SKIN PER STRUCTURAL REQ.; HEIGHT TO CEILING

DOOR TAGS

DOOR TYPE	WIDTH		HEIGHT		TRANSOM Y/N
	MIN.	RECOM.	MIN.	RECOM.	
01	34" *2	36"	6' - 8" *3	9' - 0"	Y
03	26"	26"		9' - 0"	N
05		46"		9' - 0"	N
07	34" *2	36"	6' - 8" *3	7' - 0"	Y

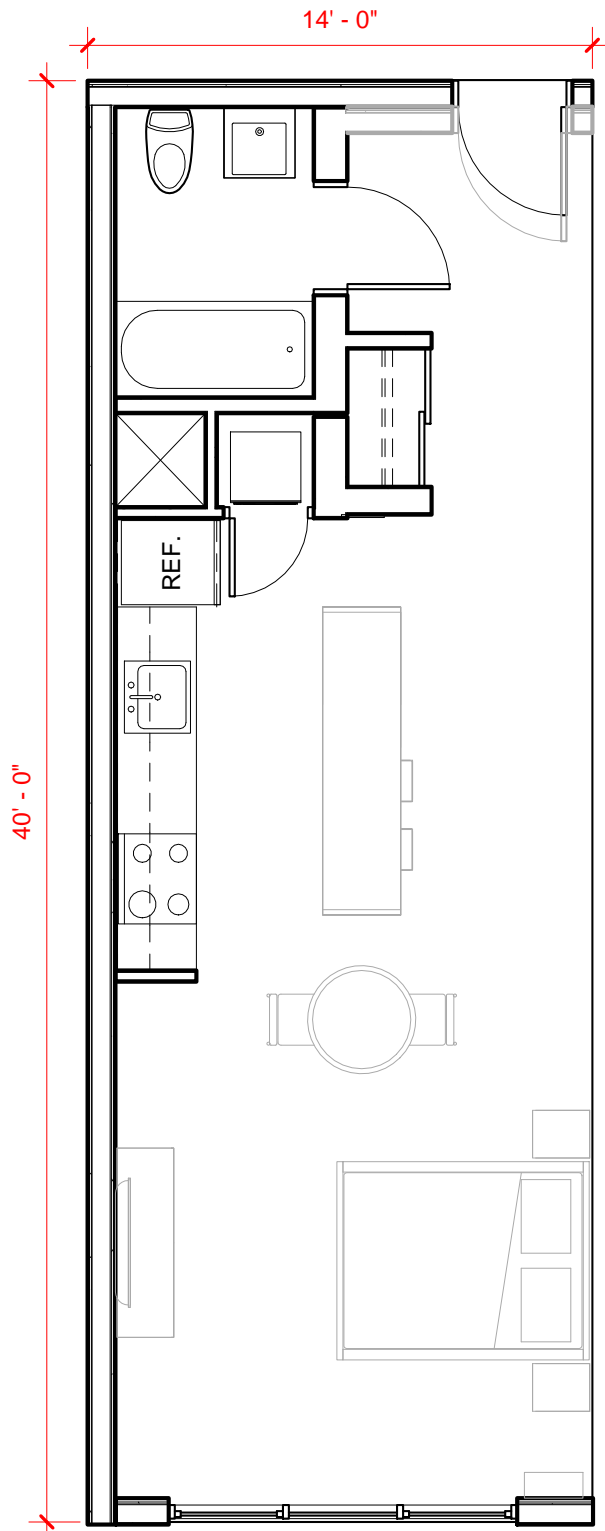
*** NOTES:**

- 1 - PER 1023.2 THE WIDTH OF AN EXIT PASSAGEWAY SERVING AN OCCUPANT LOAD OF LESS THAN 50 SHALL NOT BE LESS THAN 36"; MUST COMPLY WITH 1205.2, NATURAL LIGHT, MUST COMPLY WITH 1203.4, NATURAL VENTILATION
- 2 - PER 1132A.3 (2) DOORS WILL PROVIDE A NET CLEAR OPENING OF 32"
- 3 - PER 1132A.3 (1) DOORS SHALL NOT BE LESS THAN 6' - 8"
- 4 - OVER 14' WIDE REQUIRES 2 PILOT CARS (LEAD & CHASE)
- 5 - FOR OPTIMAL DESIGN PROPORTIONS

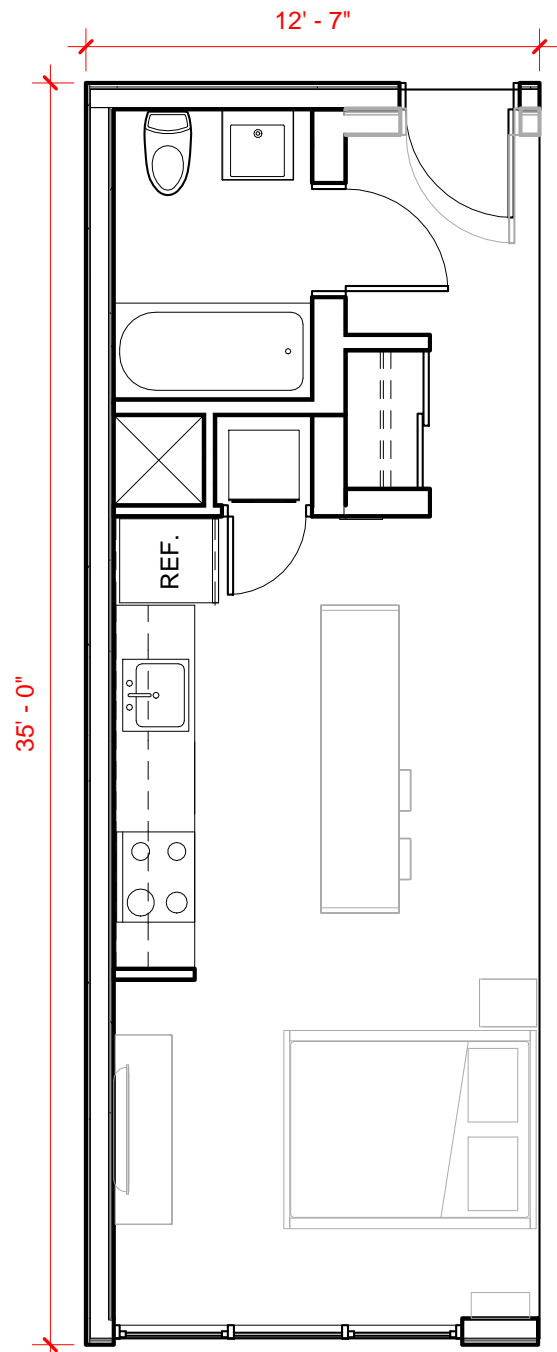
7/2/15

Scale

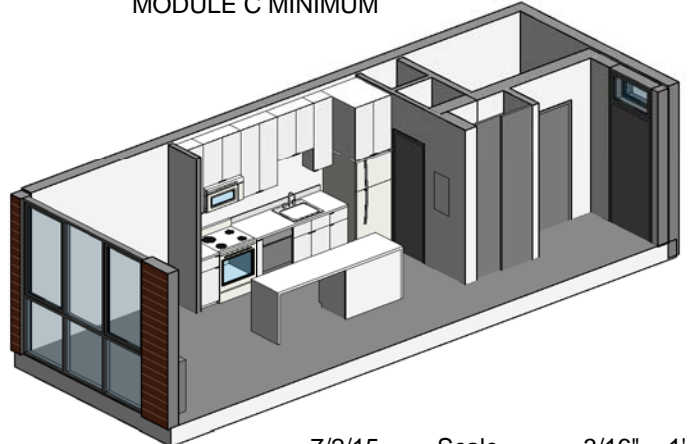
3/16" = 1'-0"



MODULE C MAXIMUM



MODULE C MINIMUM



7/2/15 Scale 3/16" = 1'-0"

MODULE C - MINIMUM & MAXIMUM DIMENSIONS
 MODULE CATALOG





CONTROL POINT

DIM. VARIABLE DIMENSION

DIM. FIXED DIMENSION

--- FIXED AREA

MODULE B2 - VARIABLE DIMENSIONS

	WIDTH	LENGTH	CEILING HEIGHT	FLOOR-TO-FLOOR HEIGHT
MINIMUM	11' - 6"	36' - 0"	8' - 0"	9' - 0"
RECOMMENDED	12' - 0"	40' - 0"	9' - 0"	10' - 0"
MAXIMUM	14' - 0"*4	40' - 0"*5	10' - 0"	11' - 0"

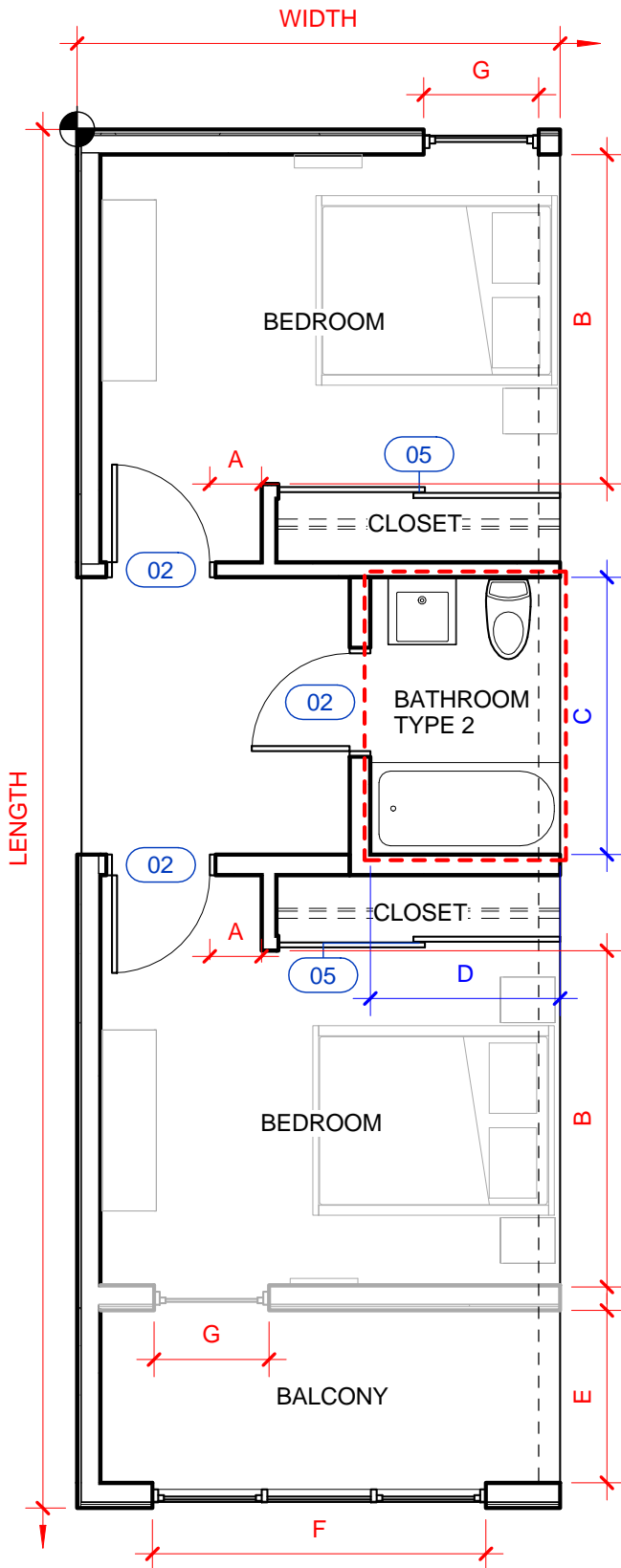
DIMENSION	NOTES
A	1' - 6" MIN. MIN. DOOR CLEARANCE
B	10' - 0" MIN. 10' x 12' MINIMUM STANDARD ROOM DIMENSION
C	7' - 11" BATHROOM TYPE 2 STANDARD
D	5' - 6" BATHROOM TYPE 2 STANDARD
E	5' - 0" REC.
F	3' - 0" MIN. COMPLY WITH EXIT PASSAGEWAY, NATURAL VENTILATION, AND NATURAL LIGHT *1 WIDTH OF WINDOW/SKIN PER STRUCTURAL REQ.; HEIGHT TO CEILING

DOOR TAGS

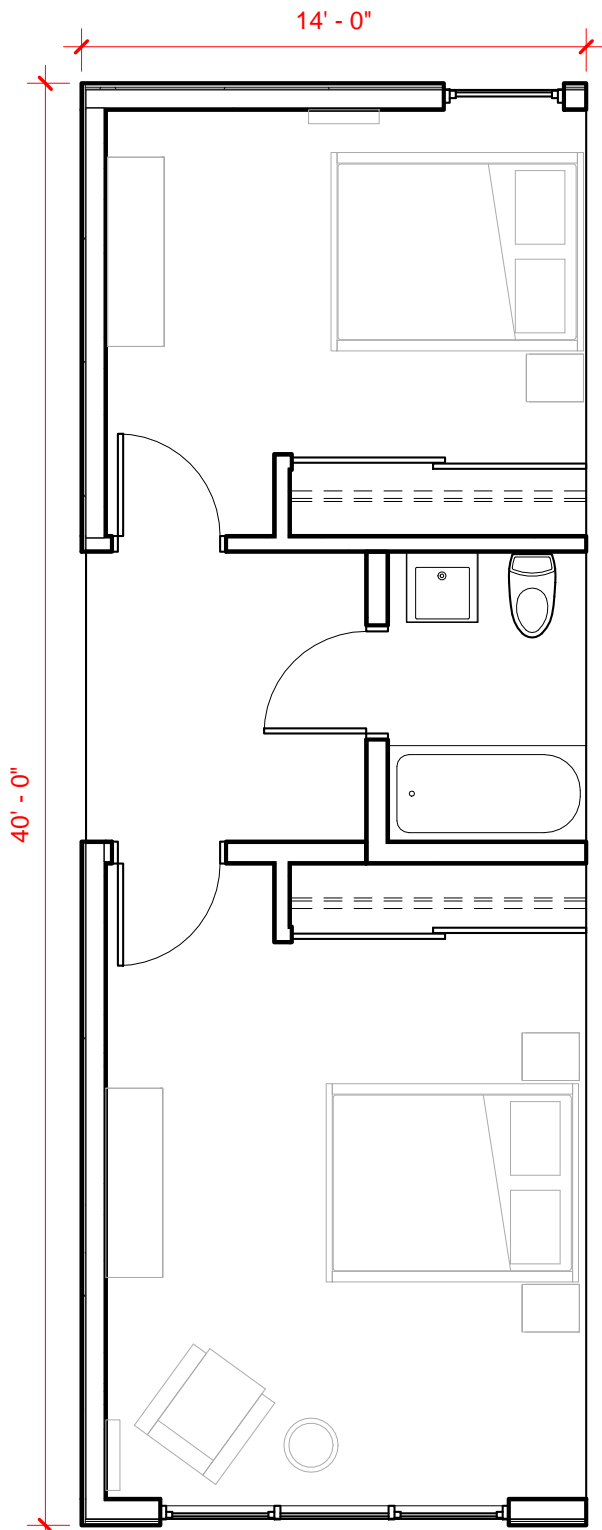
DOOR TYPE	WIDTH		HEIGHT		TRANSOM
	MIN.	RECOM.	MIN.	RECOM.	Y/N
02	34" *2	36"	6' - 8" *3	9' - 0"	Y
05		6' - 0"	6' - 8" *3	9' - 0"	N

* NOTES:

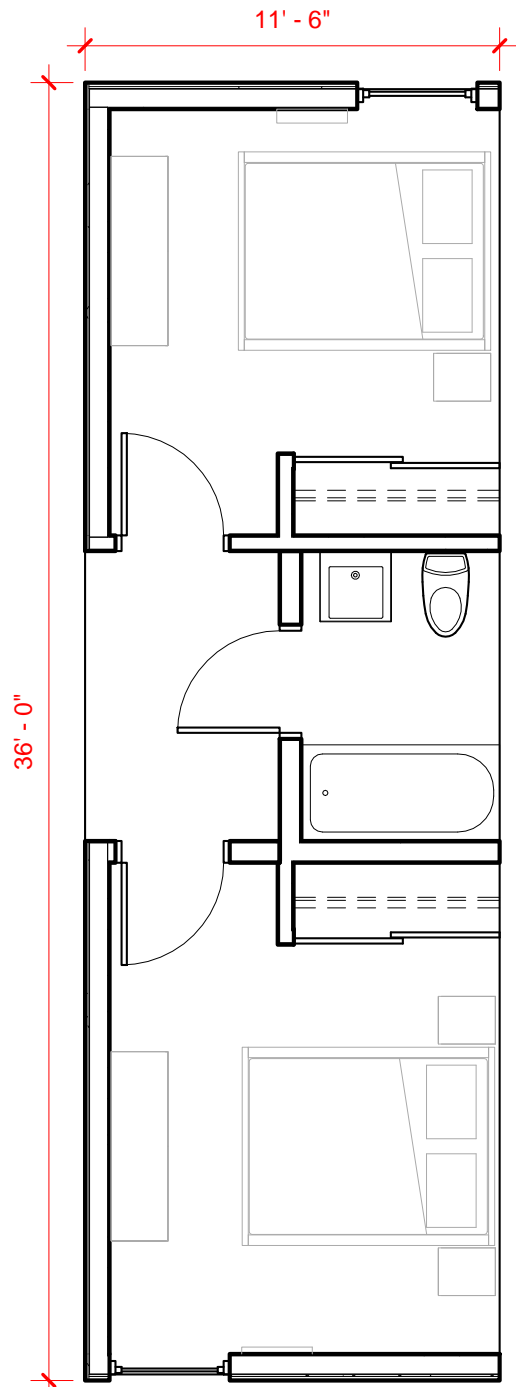
- PER 1023.2 THE WIDTH OF AN EXIT PASSAGEWAY SERVING AN OCCUPANT LOAD OF LESS THAN 50 SHALL NOT BE LESS THAN 36"; MUST COMPLY WITH 1205.2, NATURAL LIGHT, MUST COMPLY WITH 1203.4, NATURAL VENTILATION
- PER 1132A.3 (2) DOORS WILL PROVIDE A NET CLEAR OPENING OF 32"
- PER 1132A.3 (1) DOORS SHALL NOT BE LESS THAN 6' - 8"
- OVER 14' WIDE REQUIRES 2 PILOT CARS (LEAD & CHASE)
- FOR OPTIMAL DESIGN PROPORTIONS



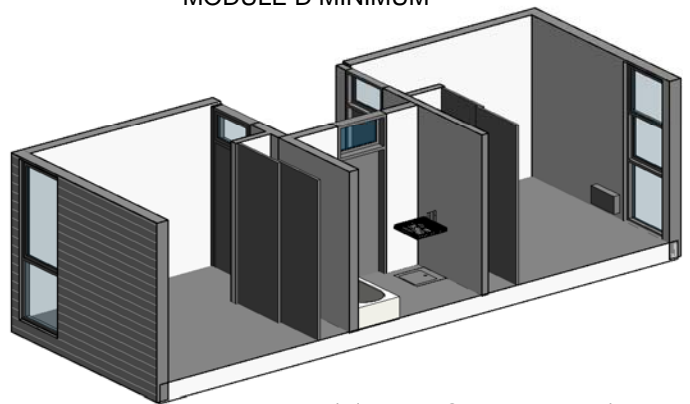
7/2/15 Scale 3/16" = 1'-0"



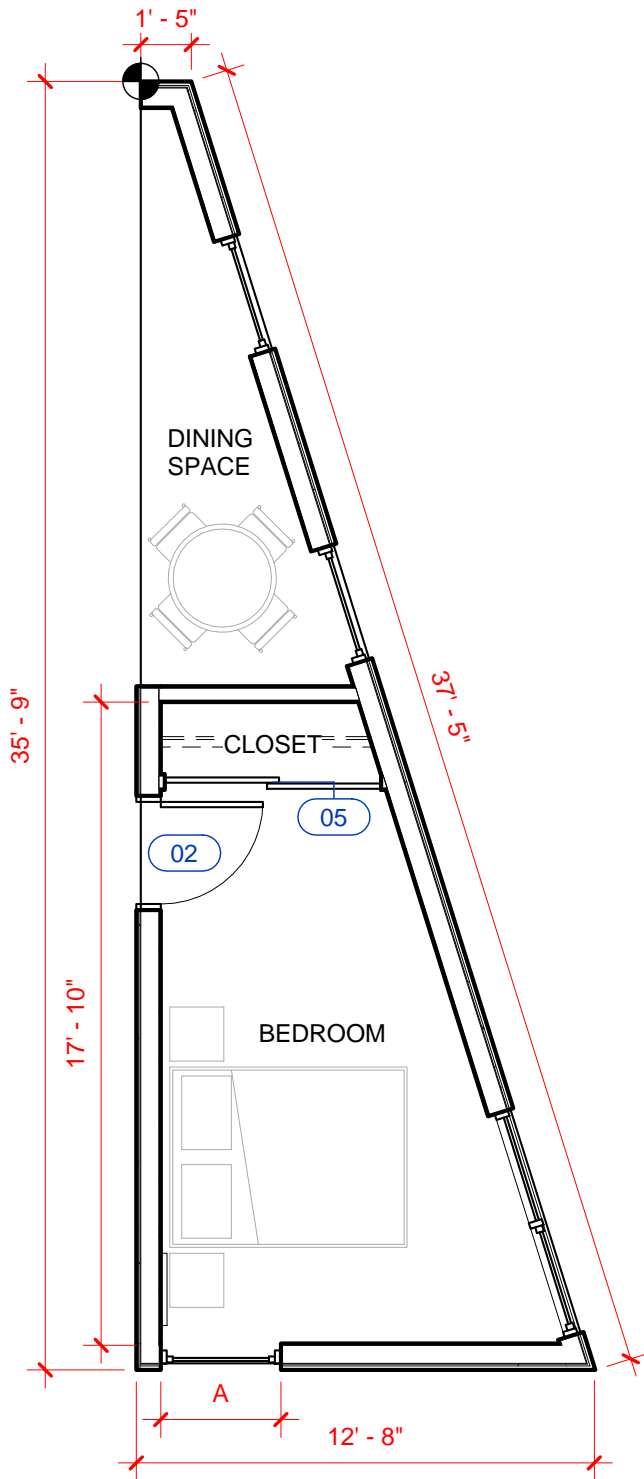
MODULE D MAXIMUM



MODULE D MINIMUM



7/2/15 Scale 3/16" = 1'-0"



 CONTROL POINT

DIM. VARIABLE DIMENSION

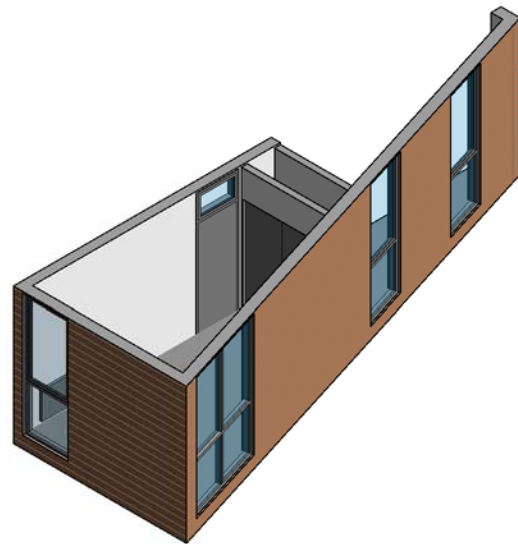
	DIMENSION	NOTES
A	3' - 0" MIN.	COMPLY WITH EXIT PASSAGEWAY, NATURAL VENTILATION, AND NATURAL LIGHT *1 WIDTH OF WINDOW/SKIN PER STRUCTURAL REQ.; HEIGHT TO CEILING

DOOR TAGS

DOOR TYPE	WIDTH		HEIGHT		TRANSOM Y/N
	MIN.	RECOM.	MIN.	RECOM.	
02	34" *2	36"	6' - 8" *3	9' - 0"	Y
05		6' - 0"		7' - 0"	N

*** NOTES:**

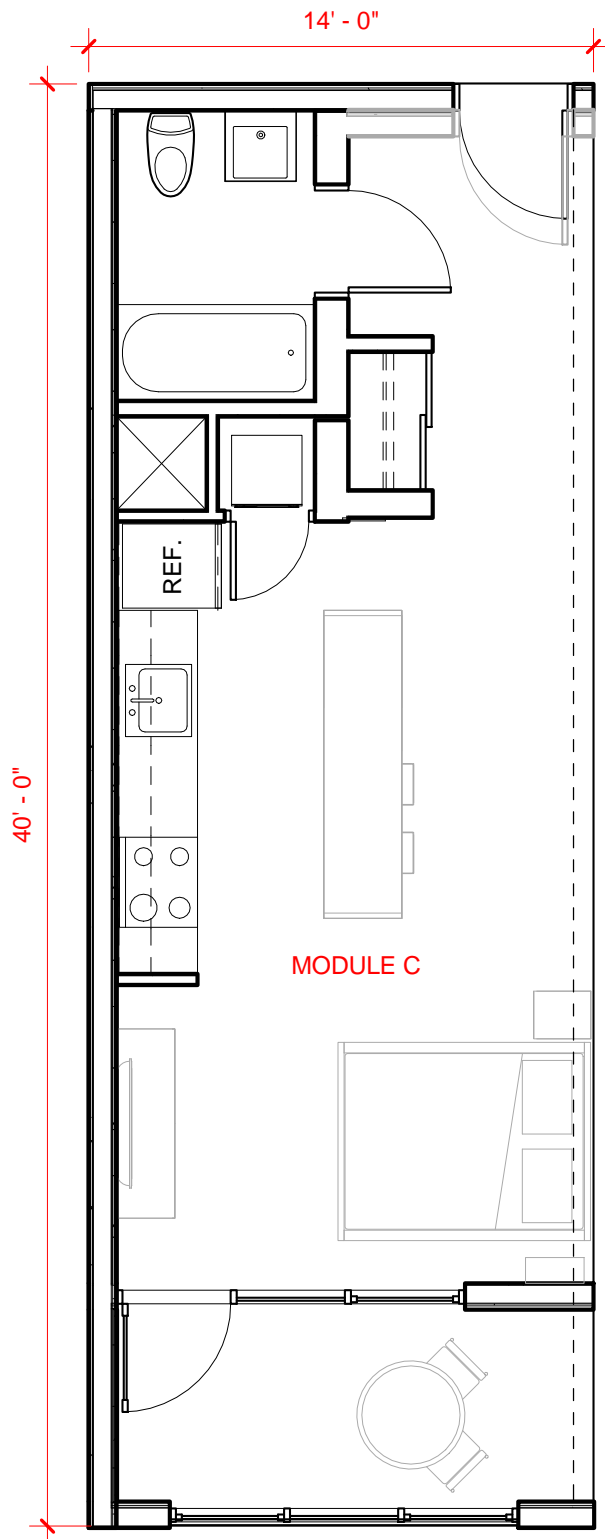
- 1 - PER 1023.2 THE WIDTH OF AN EXIT PASSAGEWAY SERVING AN OCCUPANT LOAD OF LESS THAN 50 SHALL NOT BE LESS THAN 36"; MUST COMPLY WITH 1205.2, NATURAL LIGHT, MUST COMPLY WITH 1203.4, NATURAL VENTILATION
- 2 - PER 1132A.3 (2) DOORS WILL PROVIDE A NET CLEAR OPENING OF 32"
- 3 - PER 1132A.3 (1) DOORS SHALL NOT BE LESS THAN 6' - 8"



7/2/15 Scale 3/16" = 1'-0"

UNIT PLANS

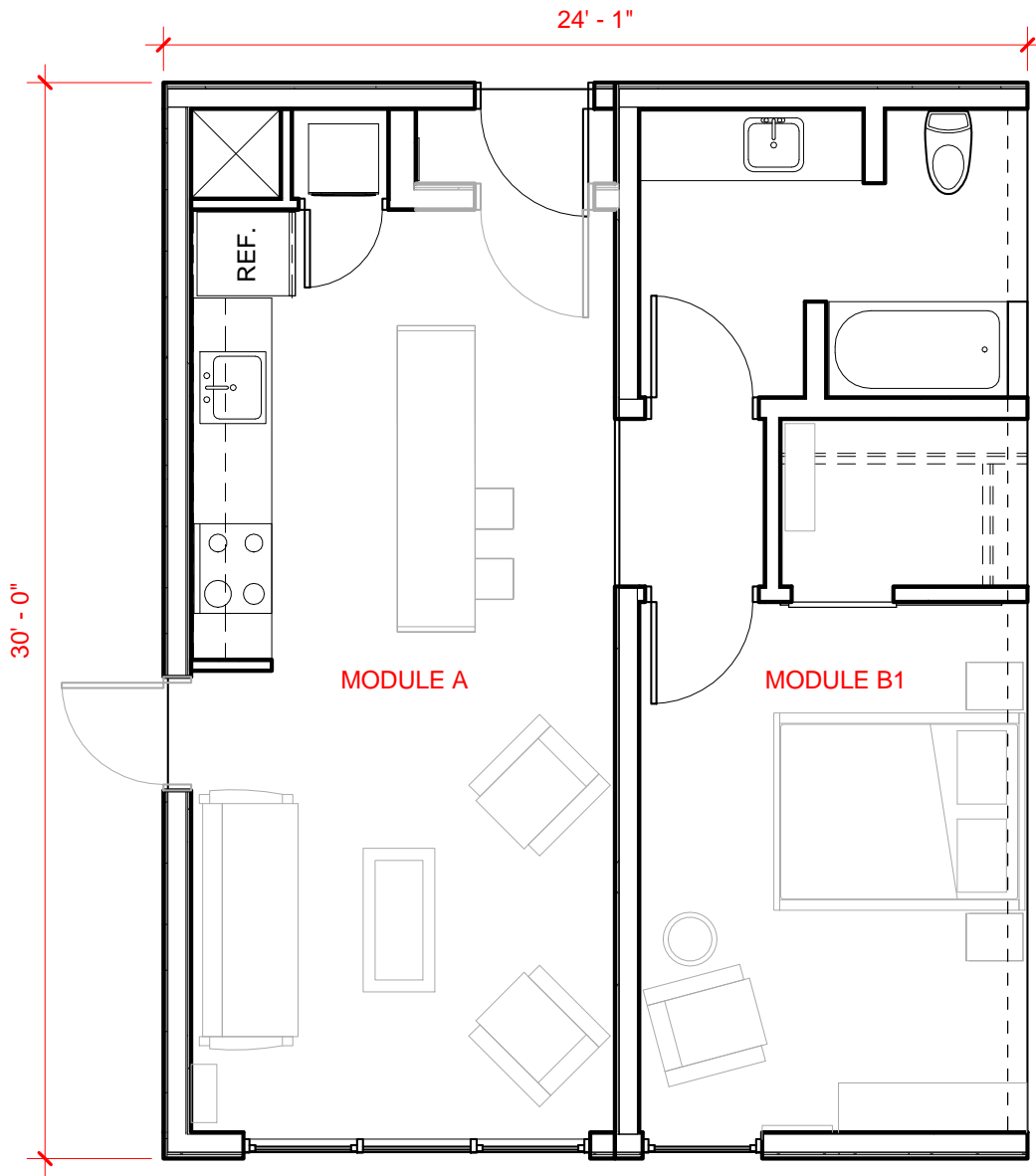
7/2/15



7/2/15

Scale

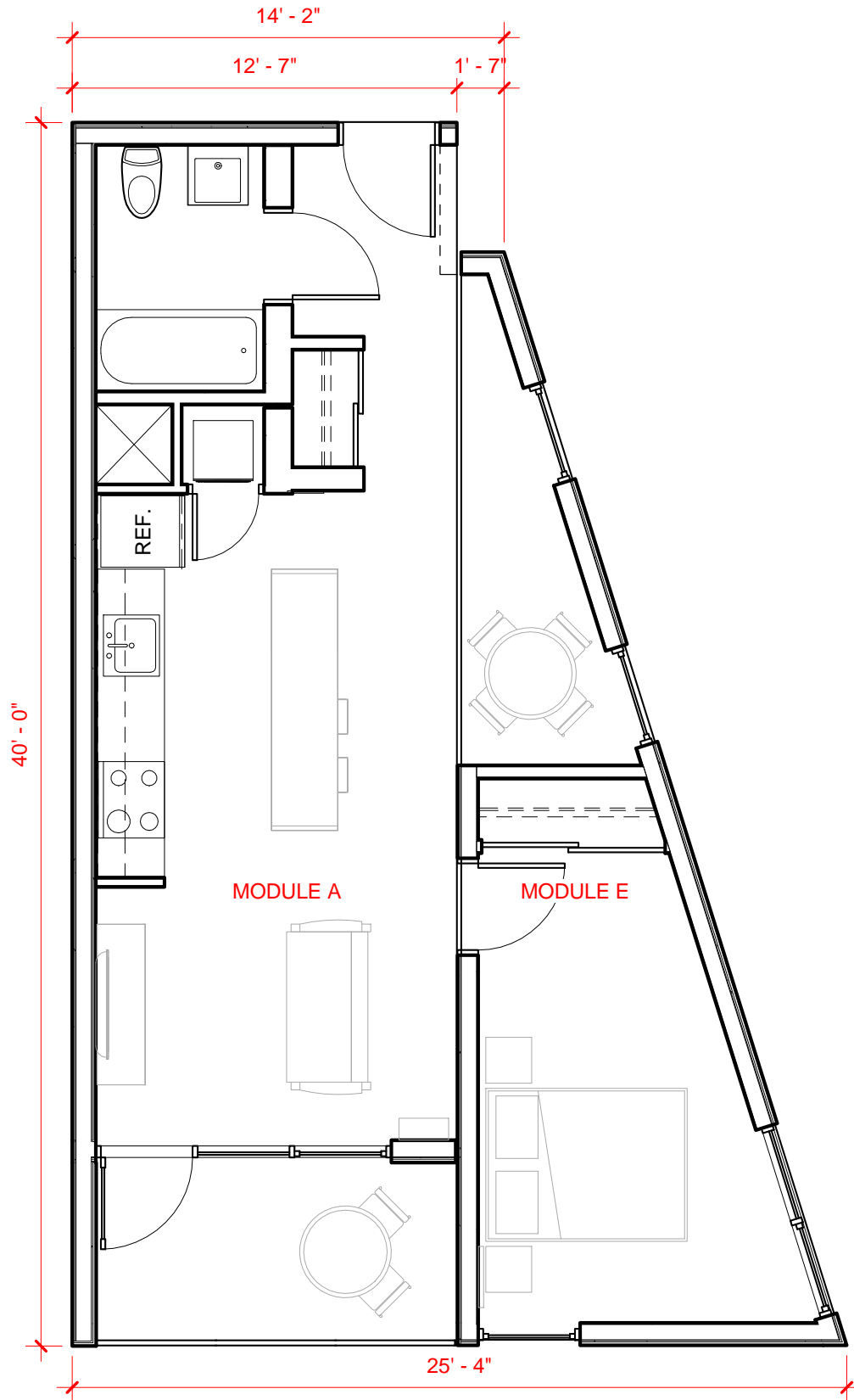
3/16" = 1'-0"



7/2/15

Scale

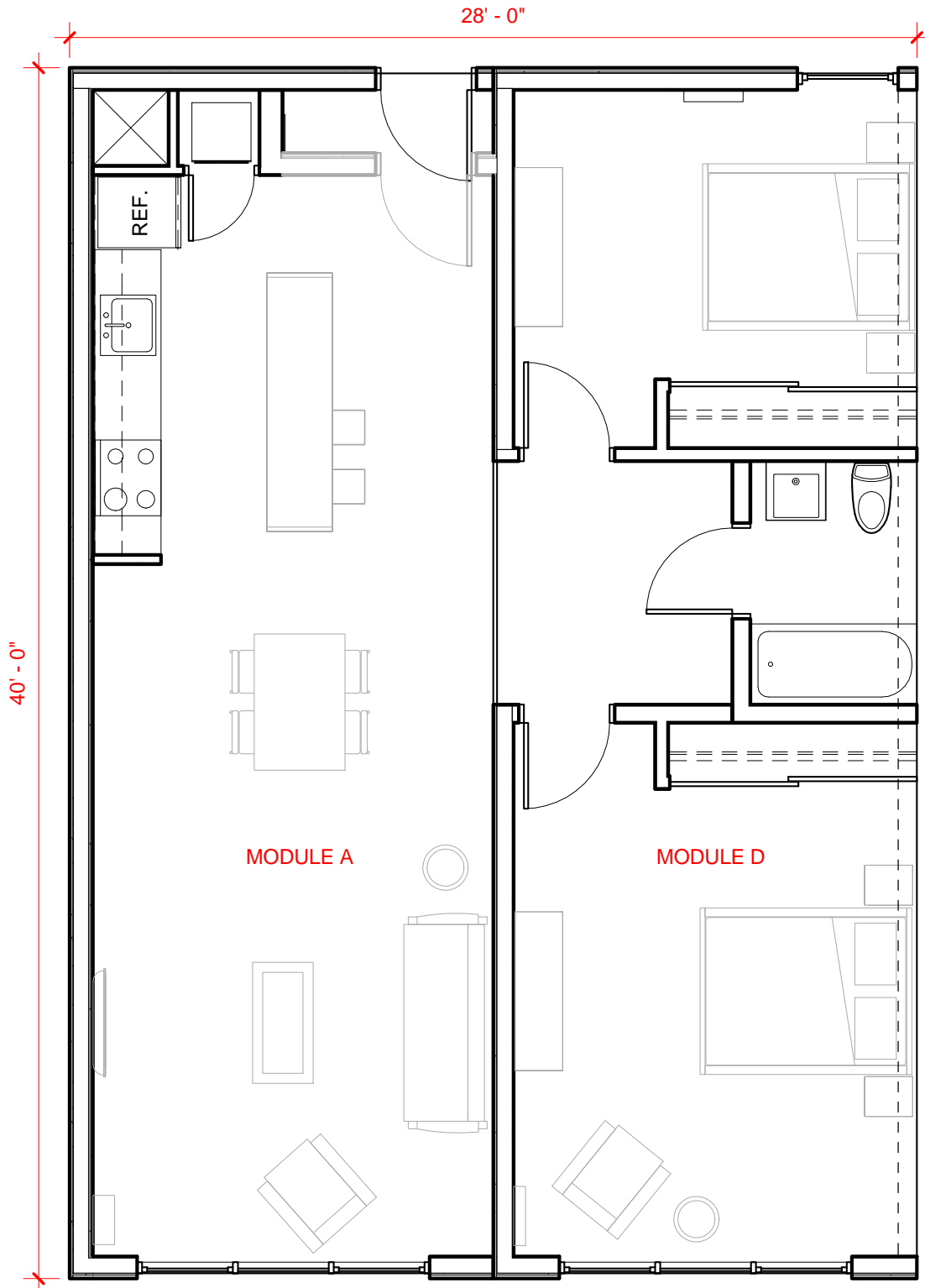
3/16" = 1'-0"



7/2/15 Scale 3/16" = 1'-0"

1 BDRM / 1 BATH
MODULE CATALOG





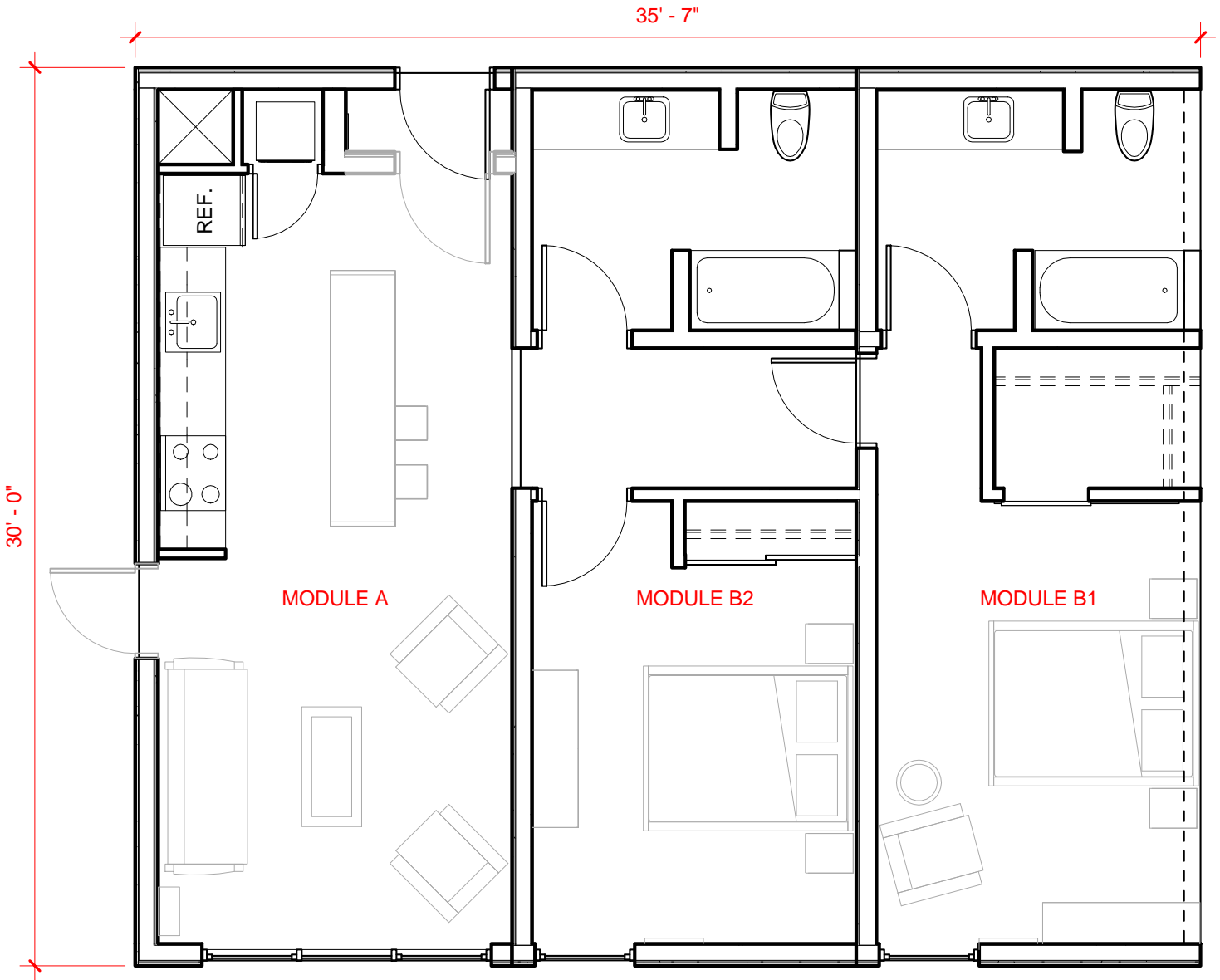
7/2/15

Scale

3/16" = 1'-0"

2 BDRM / 1 BATH
MODULE CATALOG

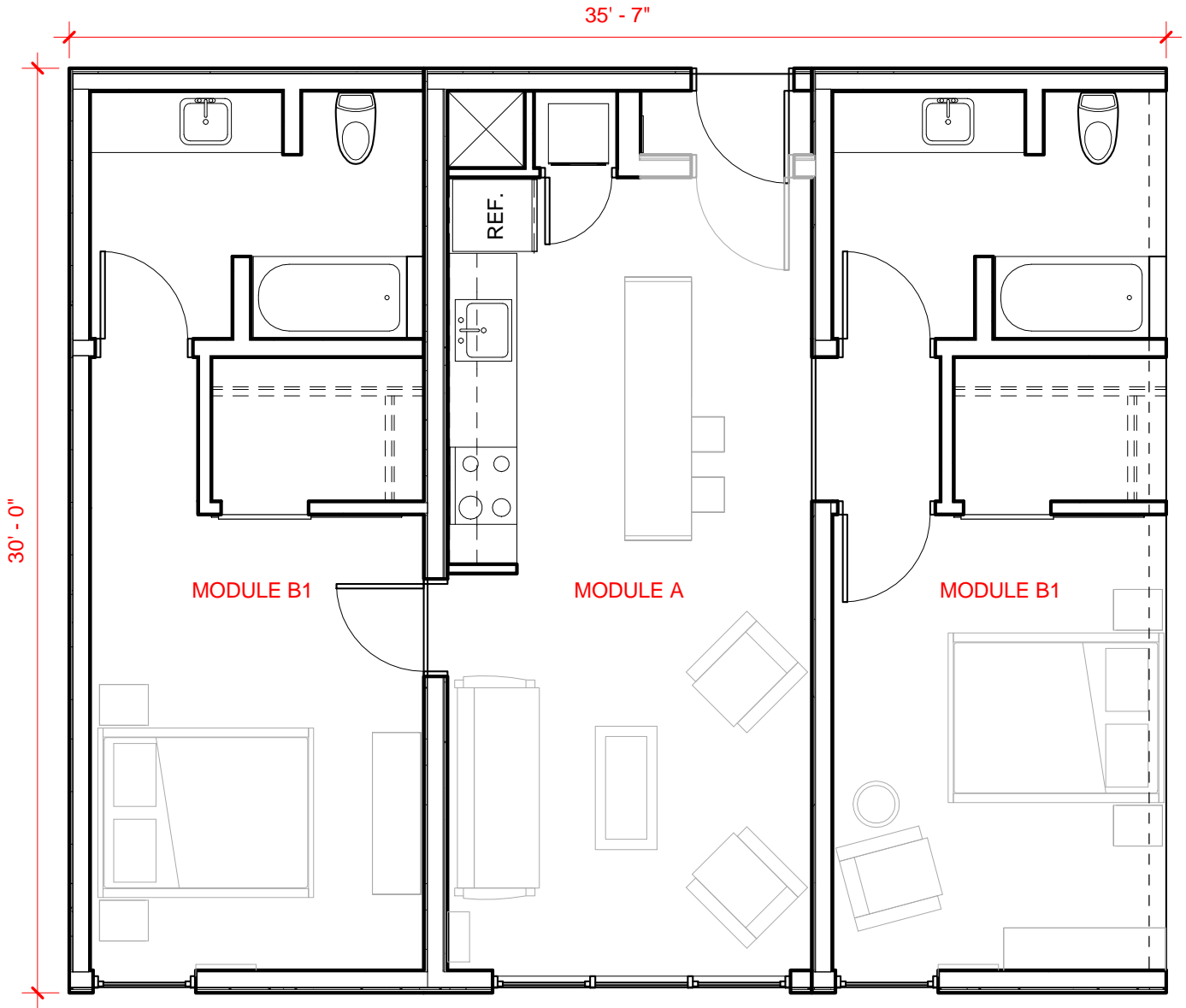
NEMO
BUILDING SYSTEMS



7/2/15 Scale 3/16" = 1'-0"

2 BDRM / 2 BATH
MODULE CATALOG

NEMO
BUILDING SYSTEMS



7/2/15 Scale 3/16" = 1'-0"

2 BDRM / 2 BATH
 MODULE CATALOG

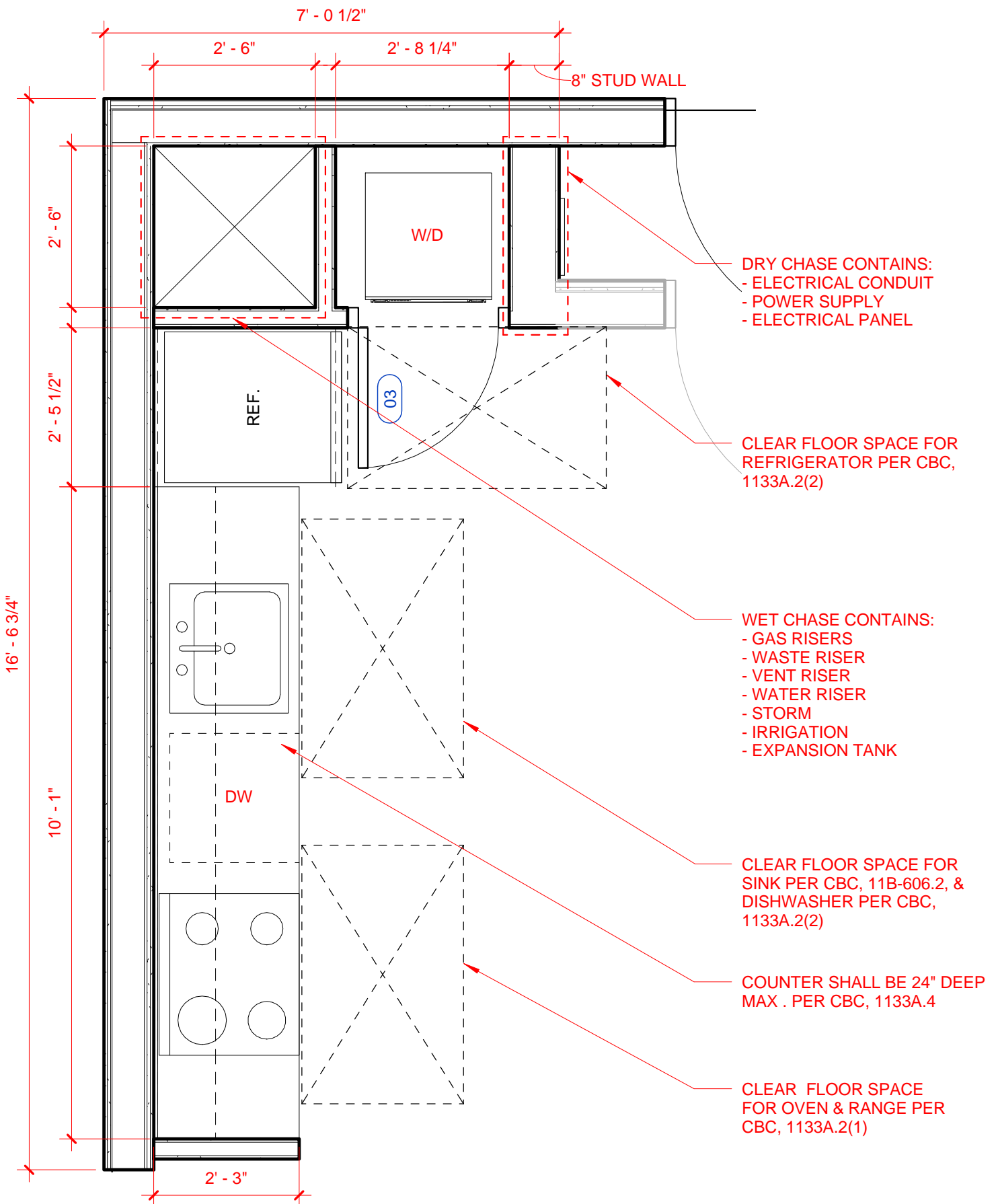


ENLARGED PLANS

7/2/15

ENLARGED PLANS
MODULE CATALOG

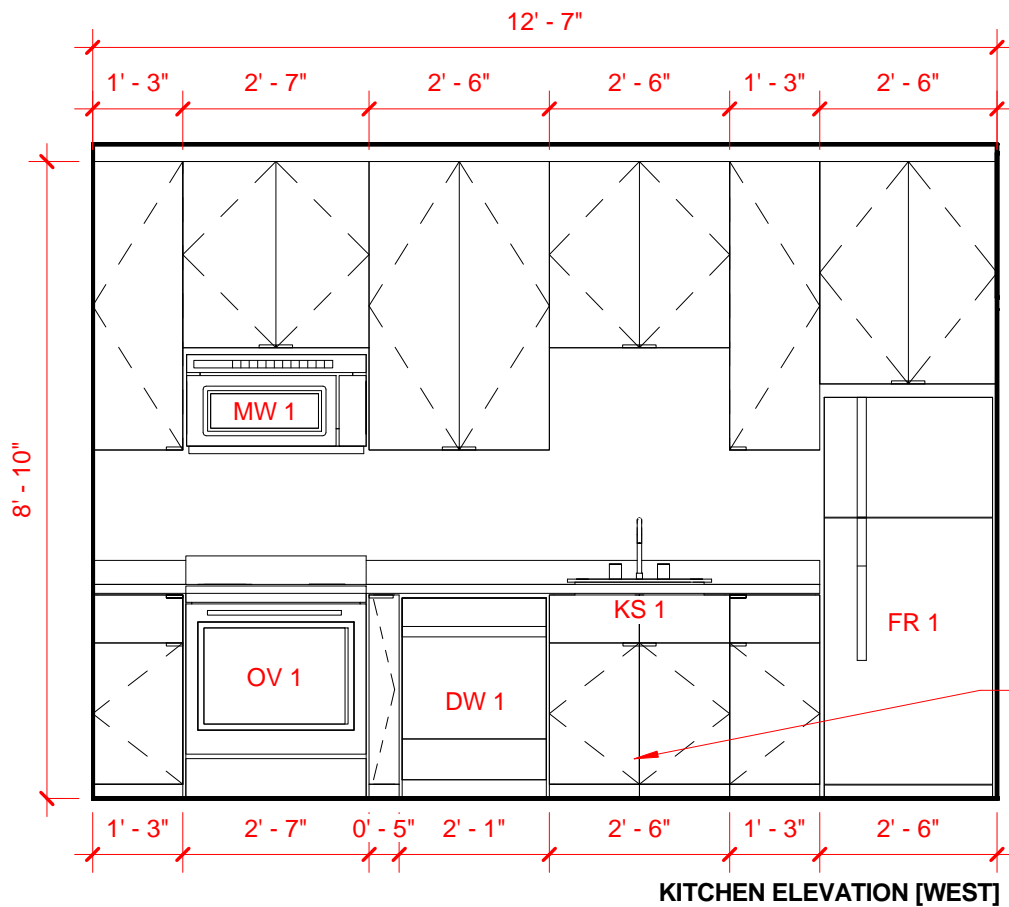
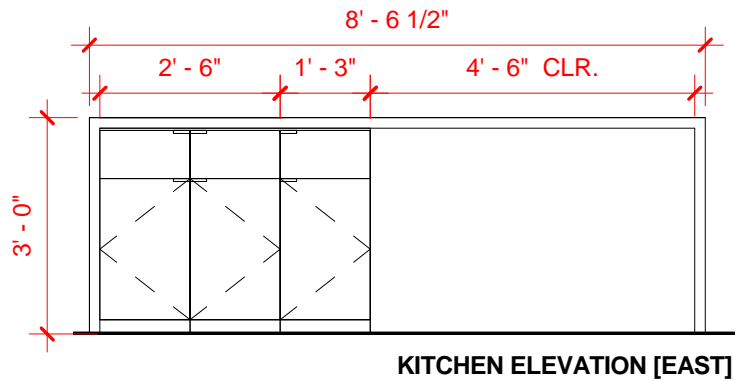
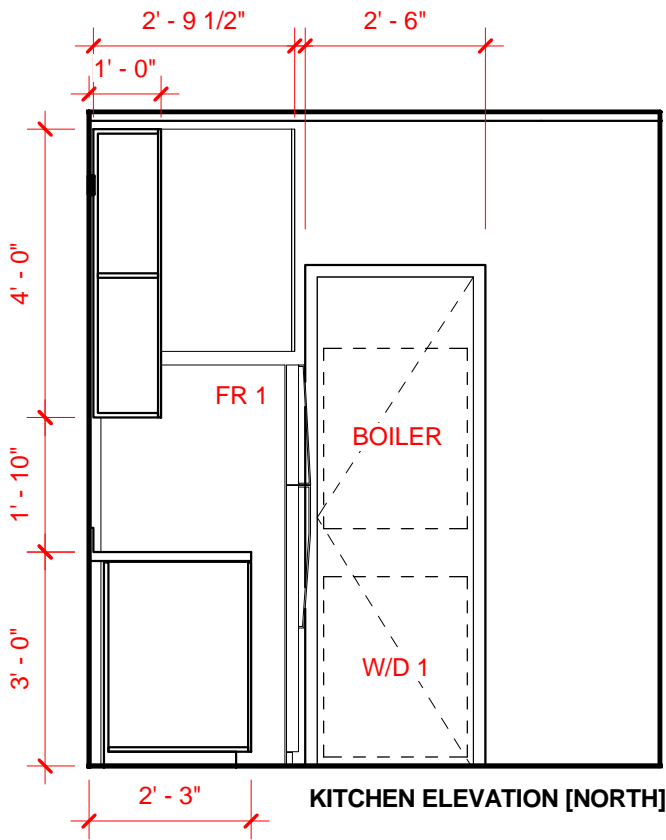




7/2/15 Scale 1/2" = 1'-0"

MODULE A KITCHEN - ENLARGED PLAN
 MODULE CATALOG



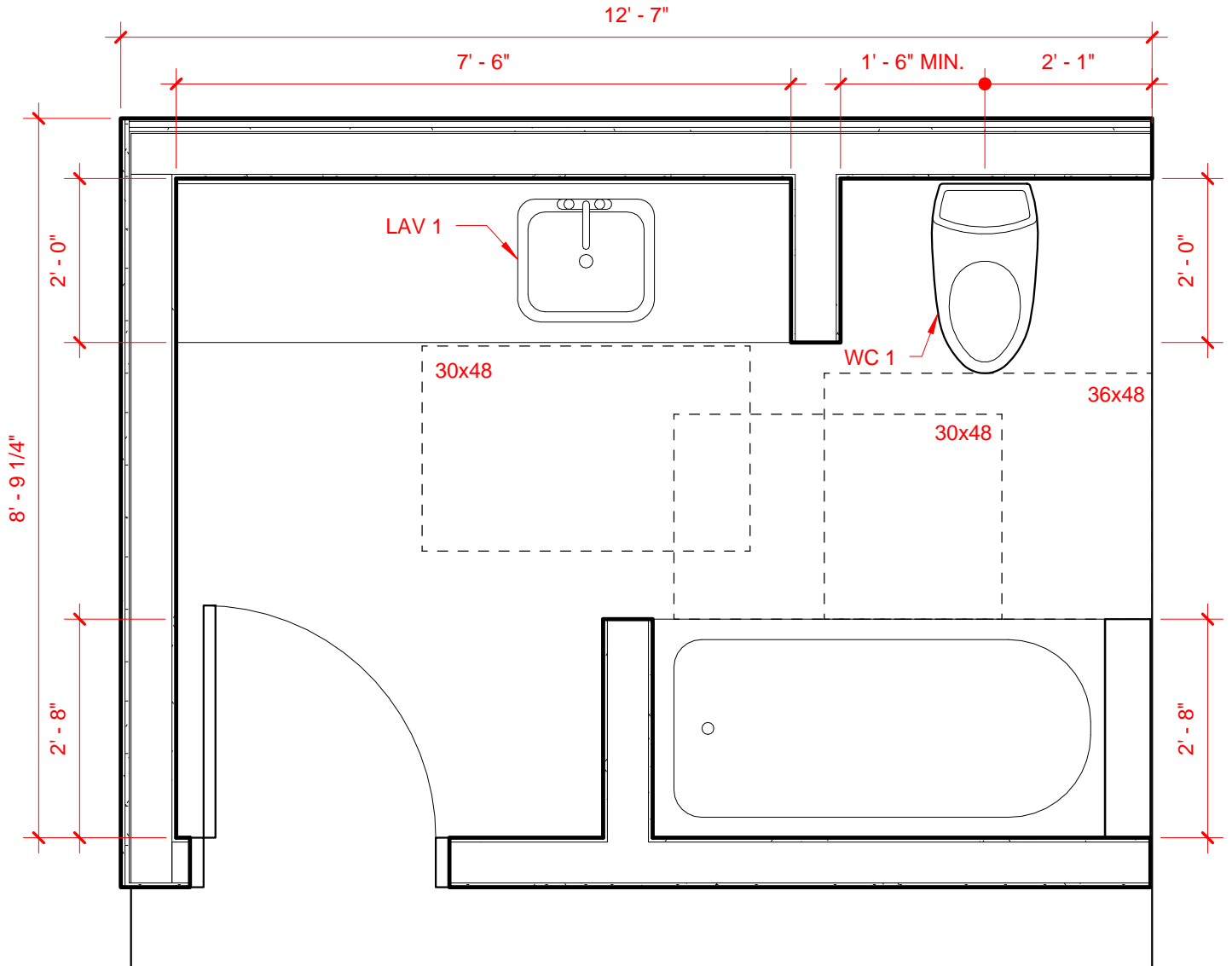


CABINETS UNDER SINK SHALL BE REMOVABLE PER CBC, SEC. 1133A.3

7/2/15

Scale

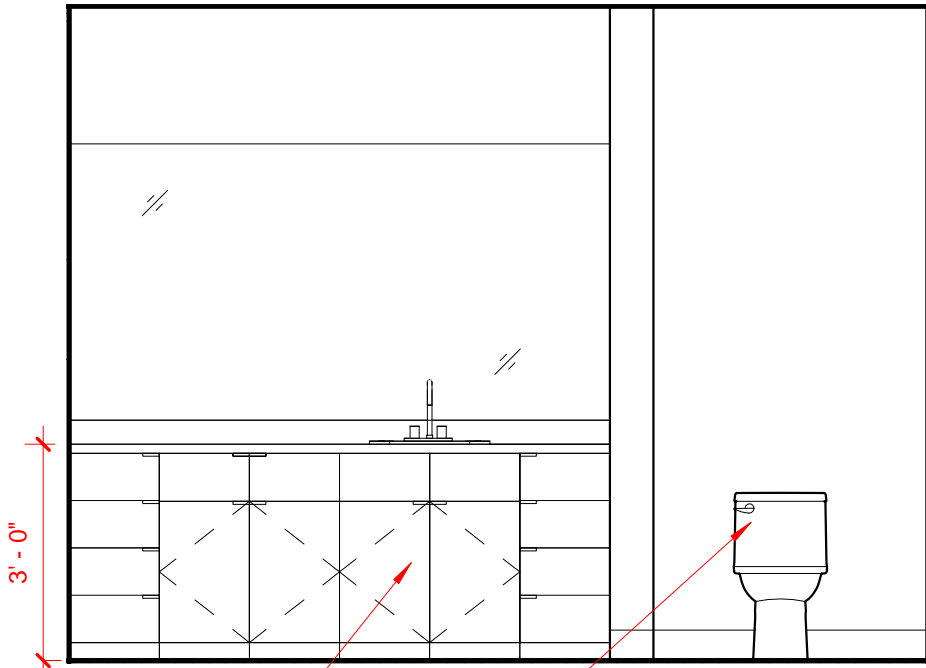
3/8" = 1'-0"



7/2/15 Scale 1/2" = 1'-0"

BATHROOM TYPE 1 - ENLARGED PLAN
 MODULE CATALOG

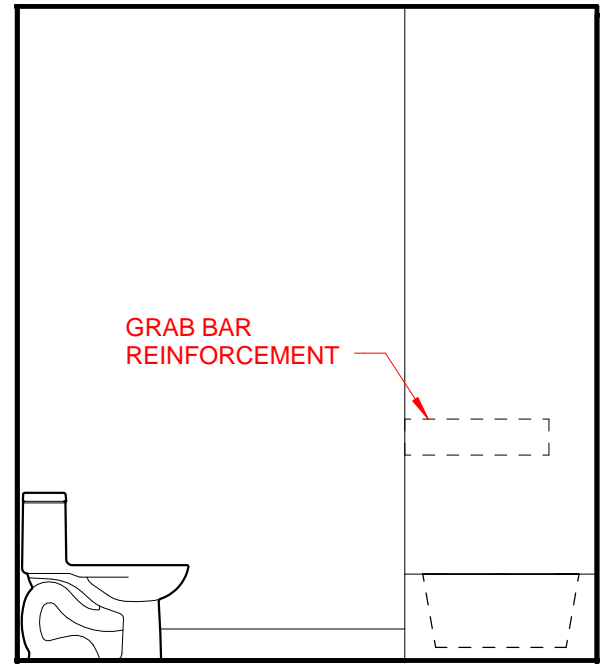




CABINETS UNDER SINK SHALL BE REMOVEABLE PER CBC, SEC 1133A.3

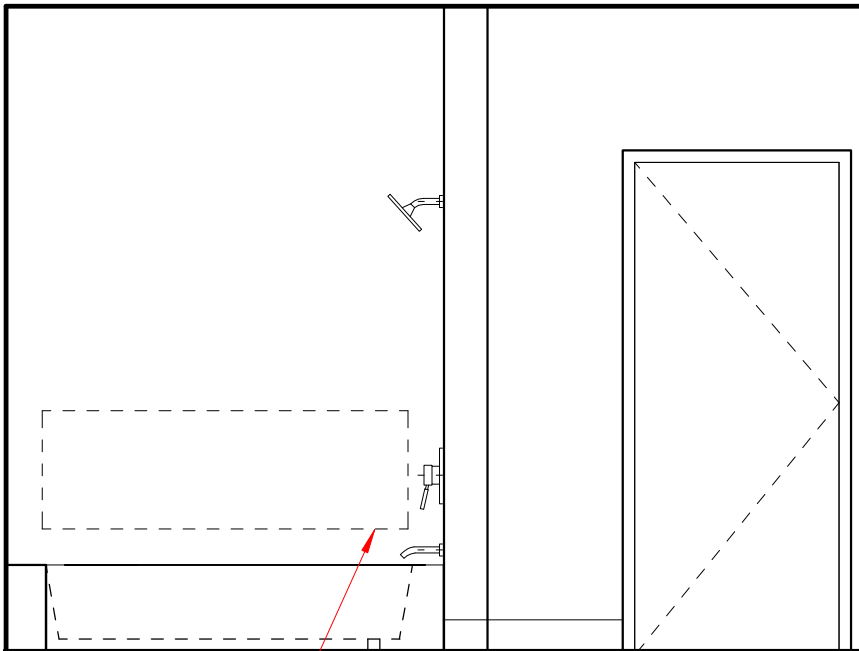
FLUSH CONTROLS SHALL BE ON OPEN SIDE OF WATER CLOSET PER 11B-604.6

BATHROOM A ELEVATION [NORTH]



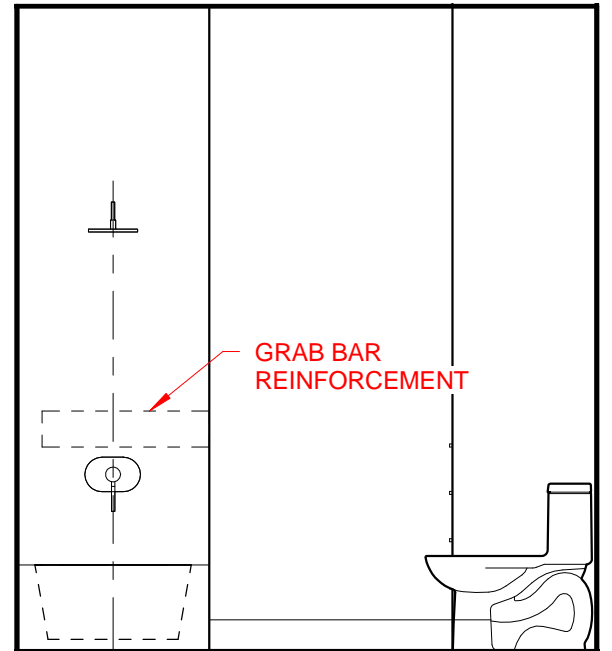
GRAB BAR REINFORCEMENT

BATHROOM A ELEVATION [EAST]



GRAB BAR REINFORCEMENT

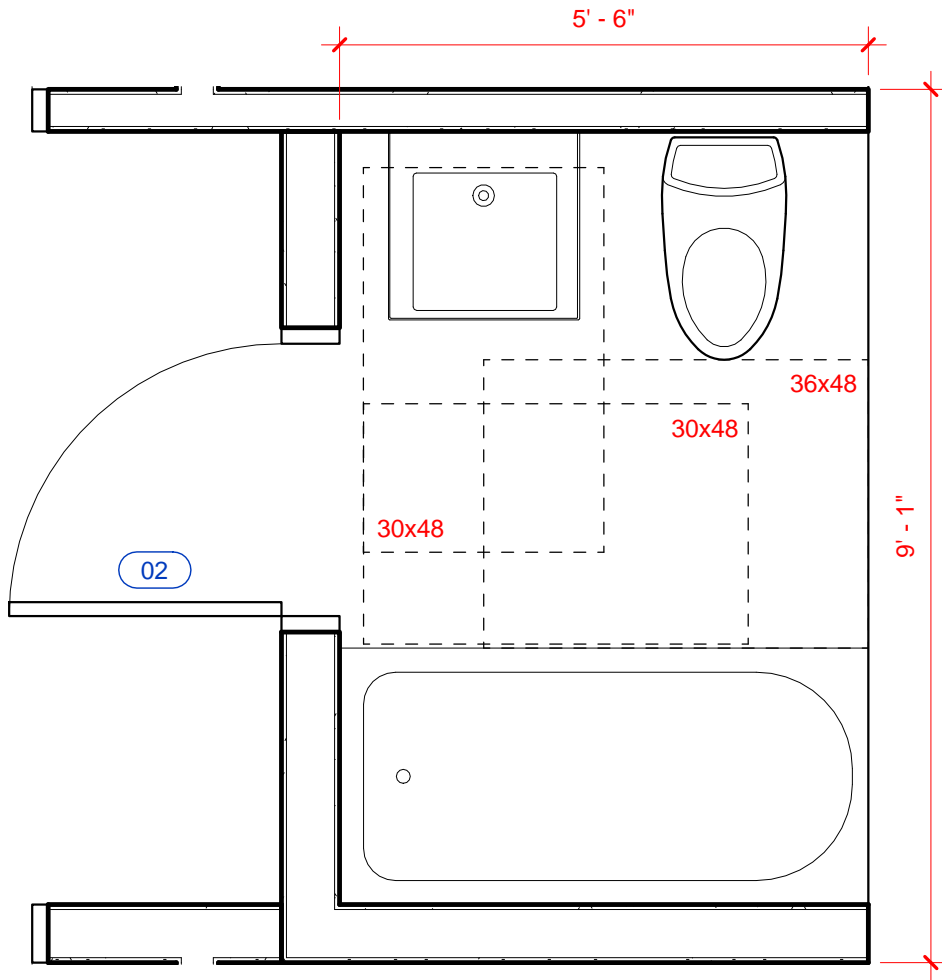
BATHROOM A ELEVATION [SOUTH]



GRAB BAR REINFORCEMENT

BATHROOM A ELEVATION [WEST]

7/2/15 Scale 3/8" = 1'-0"



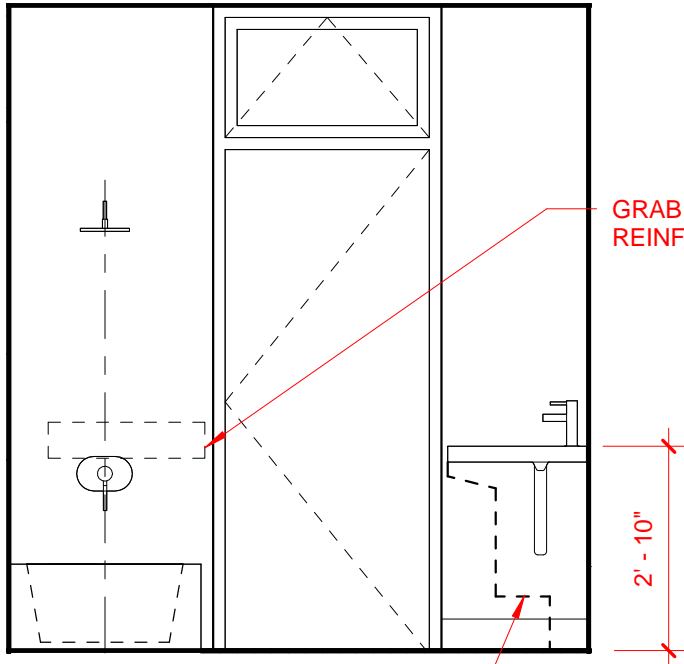
7/2/15

Scale

1/2" = 1'-0"

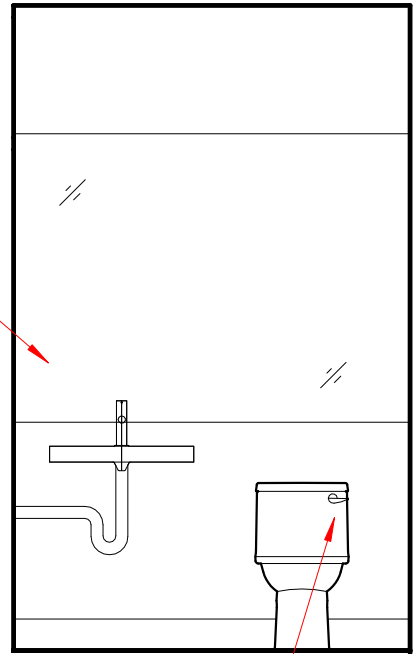
BATHROOM TYPE 2 - ENLARGED PLAN
MODULE CATALOG





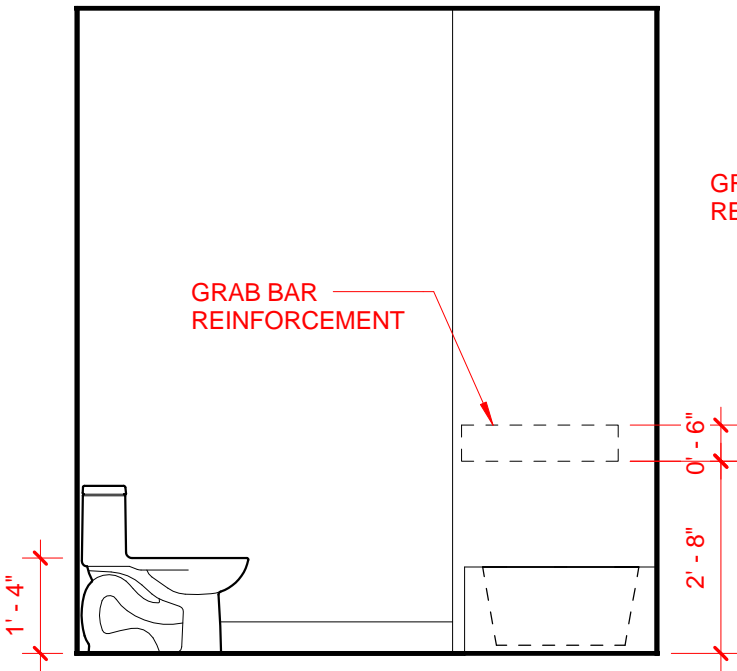
CLEAR KNEE SPACE UNDER LAVATORY PER CBC, SEC. 1134A.8(4)

BATHROOM B ELEVATION [WEST]

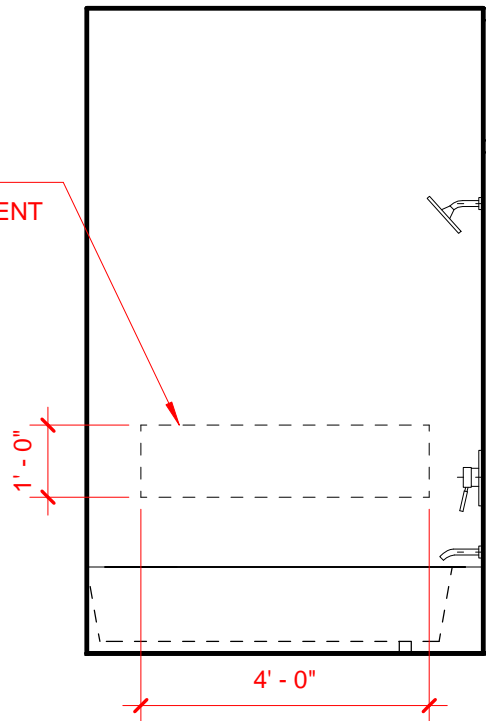


WATER CLOSET CONTROL SHALL BE ON OPEN SIDE

BATHROOM B ELEVATION [NORTH]



BATHROOM B ELEVATION [EAST]



BATHROOM B ELEVATION [SOUTH]

7/2/15 Scale 3/8" = 1'-0"